

2019



THE HOSPITAL EDUCATOR AND
ACADEMIC LIAISON ASSOCIATION

*Strength in Unity,
Power in Purpose*

April 29—May 1, 2019 Cincinnati, Ohio



April 29, 2019

Dear Conference Participants,

On behalf of the local planning committee and the executive board of the Hospital Educator and Academic Liaison Association (HEAL), we would like to thank you for attending the inaugural HEAL Association Conference and welcome you to Cincinnati! We hope you take advantage of what Cincinnati has to offer visitors while you are here. With award-winning chefs and signature beverages, distinctive venues and historic architecture, and a view and vibe that's unmistakably its own, it's hard to miss the buzz around the Queen City.

One year ago, APHOES and AECMN merged to become the **Hospital Educator and Academic Liaison Association**. As our first year comes to a close, we reflect on where we were and the progress that has been made. We continue to evolve and seek to meet the needs of our diverse membership. While steps were made to merge the infrastructure, develop a robust website and collaborate on the development of an international journal, we still have a lot to do. We encourage everyone to participate in the orientation on Monday to learn more details about the organization and ways to become involved. In addition, all active members are encouraged to attend the HEAL Association business meeting. If you are an active member of HEAL, you will have an opportunity to vote for nominated colleagues to serve on the Executive Board of HEAL for 2019-2020.

Over the next few days, there will be many opportunities for building relationships with other professionals who are supporting the educational needs of students with medical and mental health needs. We hope you will find colleagues with whom you can share information and resources, along with conference sessions that are informative and enjoyable. Please take time to visit all of the exhibitors who have invested in us and have resources to share. They will be available throughout the day on both Tuesday and Wednesday. The exhibitor booths will be located in the lobby of the Conference Center.

If you have any questions or concerns during the conference, please contact Leah Engelkamp at (513)476-5950 (cell) or email at Leah.Engelkamp@cchmc.org.

We hope you enjoy your time in Cincinnati and that you find many opportunities to learn and network during the conference. Welcome to Cincy!

Leah Engelkamp

Leah Engelkamp, MEd
Local Conference Chair
School Services Specialist
Cincinnati Children's Hospital

Mindy Elliott

Mindy Elliott, NBCT
HEAL Association Co-President
Director of Education & Quality Programming
Veritas Collaborative

Patty Dillhoff

Patty Dillhoff, MAT
HEAL Association Co-President
Conference Chair
Center for School Services Manager
Cincinnati Children's Hospital

Thank You and Additional Information

A big **THANK YOU** to the local conference planning committee and for all the hard work that went into planning this event.

Conference Planning Committee

Patty Dillhoff, Chair, HEAL Co-President
Joni Hildreth, HEAL Secretary
Brandon Sethi, HEAL Co-Treasurer
Courtney Emory, HEAL Co-Treasurer
Sara Midura, HEAL Communications and Social Media Coordinator
Sarah Smith, HEAL Vice President
Nicole Gutman, HEAL Speaker Liaison
Jodi Krause, Conference Past Local Chair
Leah Engelkamp, Local Conference Chair

Credit Hours

A Certificate of Attendance will be provided for all attendees following the conference. Graduate credit hours will be available through the University of Cincinnati. Information will be available on the HEAL Conference website.

Special Needs

In accordance with The Americans with Disabilities Act, HEAL Association will take the necessary steps to ensure that no individual with a disability is excluded or denied services. Please contact the Conference Planning Committee at least two weeks prior to your arrival with any special requests.

Wifi Accessibility

Free Wifi is available to conference participants.

Network: Hyatt Meeting

Passcode: CCHMC19



Executive Board

Co-Presidents

Patty Dillhoff, MAT

Center for School Services Manager
Cincinnati Children's Hospital
patricia.dillhoff@cchmc.org

Mindy Elliott, NBCT

Director of Education & Quality Programming
Veritas Collaborative
melliott@veritascollaborative.com

Vice President

Sarah Smith, BA

Hospital Teacher/School Liaison
Helen DeVos Children's Hospital
sarah.smith2@helendevoschildrens.org

Secretary

Joni Hildreth, MPsy, NBCT

Education Coordinator
Atrium Health
joni.hildreth@atriumhealth.org

Co-Treasurers

Courtney Emery, MEd, NBCT

School Intervention Specialist
University of Kentucky
courtney.white@uky.edu

Brandon Sethi, MEd

School Services Specialist
Cincinnati Children's Hospital
Brandon.Sethi@cchmc.org

Media Coordinator

Sara Midura, BS

Educational Liaison
Riley Hospital for Children
smidura@iuhealth.org

Member At-Large

Patricia Kerrigan, PhD

School Intervention Specialist
UCLA Mattel Children's Hospital
pkerrigan@mednet.ucla.edu

History

In recognition of the common overlap in mission and professional members within AECMN (Association for the Education of Children with Medical Needs) and APHOES (Association of Pediatric Hematology Oncology Educational Specialists), the first Joint National Conference of the two organizations began in 2014 at Nationwide Children's Hospital in Columbus, Ohio. This joint endeavor proved useful in streamlining the work and networking for members of each organization. In 2015, a National Task Force was formed to survey members about the potential for a merger of the two organizations. At that time, it was the recommendation of this Task Force (to the individual Executive Boards) that a merger be put on hold. There was definite interest, but the timing was not favorable.

After a few more successful joint conferences, the Executive Boards began to revisit this possibility. Each organization appointed two Board members to serve on a workgroup to facilitate the potential merger. Both AECMN and APHOES applied for pro bono legal counsel to assist in proper planning for this possibility. The legal teams advised the workgroup to determine the basic framework of a merger and the necessary planning phases of this opportunity. The merger proposal was approved by each Executive Board and put to a vote with membership at the 2018 Joint National Conference hosted by Children's Hospital Colorado in Aurora, Colorado.

On May 14, 2018, the two organizations officially merged and became a 501(c)(3) not-for-profit professional association in the State of Ohio named **The Hospital Educator and Academic Liaison Association (HEAL)**. The inaugural HEAL conference will be hosted by Cincinnati Children's in the spring of 2019.

Cincinnati and Area Attractions

Cincinnati...a regional destination for incredible dining, amazing outdoor events, fun shopping, and one-of-a-kind experiences. Visitors will find more than 400 places to shop, dine and play within easy walking distance from each other. Downtown Cincinnati also boasts an arts and culture landscape steeped in history and filled with cutting edge work. From the country's fifth oldest symphony to a world-renowned contemporary arts space and a thriving indie music scene, more than three million people attend events at downtown's theaters, museums and galleries each year.

—Quote from: *Downtown Cincinnati, Inc.*

Hotel Information

HYATT REGENCY CINCINNATI

151 West Fifth Street

Cincinnati, OH 45202

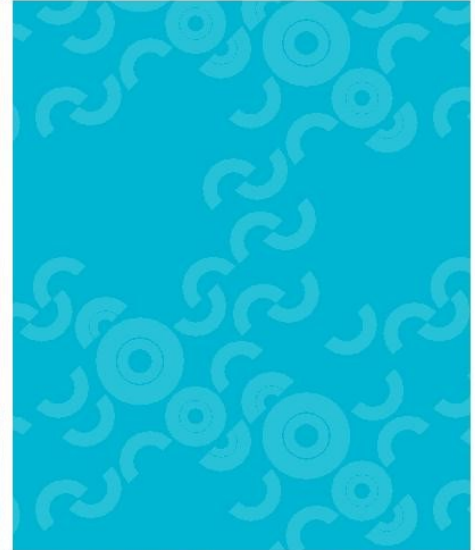
Telephone: 513-579-1234



Conference Objectives

Overarching objectives for this conference are:

- To promote collaboration among professionals serving students with chronic medical and mental health conditions.
- To provide opportunity for strategic planning and participation in the development of action steps.
- To develop advocacy skills, knowledge and methods for intervention with students who manage medical and mental health conditions.



Center for School Services and Educational Research at Cincinnati Children's



Improving Educational Outcomes Together for Students with Chronic and Mental Health Conditions

The Center for School Services and Educational Research (CSSER) is committed to improving educational outcomes for students with chronic and mental health conditions, both locally and nationally, by using a multi-faceted approach that incorporates direct patient care, research, advocacy, and community outreach, serving the variety of stakeholders involved in a child's education.

CSSER supports the academic and emotional needs of school-age youth who experience barriers to school success by providing tailored, direct instruction during hospital admissions, and individualized school re-entry plans. For additional information, please contact us at: School_Services@cchmc.org



Conference at a Glance

Monday, April 29, 2019		
When	What	Where
8:30 AM	Registration Opens	Regency North Foyer
8:30—9:30 AM	Light Breakfast	Regency North Foyer
9:00 AM—12:00 PM	Work Groups	Regency BC
12:00—1:00 PM	Lunch and Networking	Regency BC
1:00—2:30 PM	Orientation to HEAL Association	Regency BC
	Cincinnati Children's Hospital Tour Group #1	Hotel Lobby
2:30—4:00 PM	Networking Session	Regency BC
	Cincinnati Children's Hospital Tour Group #2	Hotel Lobby
5:00—8:00 PM	Welcome Reception and Dinner (Awards & Keynote)	Regency North Foyer & Regency BC
Tuesday, April 30, 2019		
7:30 AM	Registration Opens	Regency North Foyer
7:30—8:30 AM	Continental Breakfast	Regency BC
8:30—9:00 AM	Welcome and Conference Kick-Off	Regency BC
9:00—10:00 AM	Keynote: School Alliances for Children With Chronic and Complex Conditions	Regency BC
10:00—10:15 AM	Break	
10:15—11:15 AM	Exploring Implications of Medical-Educational Collaboration for School Success	Regency BC
	Supporting the Student with Sickle Cell Disease: Promoting Proactive Planning Through the Use of a Comprehensive School-Based Handbook	Regency E
	Executive Dysfunction Interactive Workshop: Compensatory Strategies and Aides for Supporting Patients with Learning, Behavior, and Attentional Weakness	Regency F
11:15—11:30 AM	Break	
11:30 AM—12:30 PM	What About Us? The Unique Needs of AYA Patients Age 15-22	Regency E
	Navigating Change in Education in the Ever-Evolving Healthcare System?	Regency BC
	Assessing the Learning Outcomes of an Innovative Teaching Program Using Chronically Ill Patients' Experience/Disease as the Springboard for Learning About Science and Math	Regency F
12:30—1:30 PM	Lunch	Regency BC
1:00—2:00 PM	Poster Presentations and Vendor/Exhibitor Tables	Regency North Foyer

Tuesday, April 30, 2019—continued

When	What	Where
2:00—3:00 PM	The Behavioral Health Transition Initiative: Developing a Transition-Planning Framework for the Return to School from Behavioral Health Hospitalizations	Regency E
	Exploring the Intersections of Chronicity: School Implications Across a Range of Conditions	Regency BC
	Increasing Access to College and Career Support for Patients	Regency F
3:00—3:15 PM	Break	
3:15 PM—4:15 PM	The Development of an Educational and Vocational Needs Survey for Adults with Childhood-Onset Chronic Health Conditions	Regency E
	Key Educational Factors for the Education of Students With a Medical Condition	Regency BC
	Chronic Health Conditions and Executive Functioning: Strategies for Math Education	Regency F

Wednesday, May 1, 2019

7:30—8:30 AM	Continental Breakfast	Regency North Foyer
8:00—9:00 AM	HEAL Business Meeting	Regency BC
9:00—9:30 AM	Networking	
9:30—10:30 AM	A Strong Volunteer Program Helps Power the Hospital School	Regency E
	Get Published! The Path to Publication in the New International Journal, <i>Continuity in Education</i>	Regency F
	Educational Implications for Patients with Neurological Disorders	Regency BC
10:30—10:45 AM	Break	
10:45 AM—12:15 PM	Navigating Change: What is Your True North, and How Do You Get There?	Regency BC
12:15—12:30 PM	Closing Remarks	Regency BC
12:30—1:30 PM	Boxed Lunch (Eat In or To Go)	Regency BC



Monday, April 29, 2019 — Conference Kick-Off

Hyatt Regency Cincinnati

151 West 5th Street, Cincinnati, OH 45202

8:30 AM—7:00 PM **Registration Open**
Location: Regency North Foyer

8:30 AM—9:30 AM **Light Breakfast**
Location: Regency North Foyer

9:00 AM—10:00 AM **Executive Board Meeting**
Location: Regency E

10:00 —11:45 AM **Work Groups**

- Nominating
- Editorial
- Professional Development
- Membership/Marketing
- Website Design

Location: Regency CB

There is “power in participation” and so we ask that you come prepared to share, connect, and collaborate on best practices and experiences. There will be opportunities for building relationships, as well as providing input as we are Building our Future. The day will begin with individual committee meetings or free time to enjoy the beautiful city of Cincinnati. Whether you have been a member of a committee or not, this meeting time will be an opportunity for various groups to make progress on current projects/initiatives. All are welcome to attend!

12:00 PM—1:00 PM **Lunch and Networking**
Location: Regency CB

1:00 PM—2:30 PM **Orientation**
For new and returning members: What is The HEAL Association all about? Learn about our history, the merger, our new logo and website, committee opportunities, and the future plans of our organization.
Presenters: Patty Dillhoff and Mindy Elliott, HEAL Co-Presidents
Location: Regency CB

Cincinnati Children’s Hospital Tour Group #1

Jump on the bus and tour some of the highlights at Cincinnati Children’s Hospital main campus (both Tour Group #1 and Tour Group #2 will receive the same tour)

Location: meet in the Hotel Lobby (1st floor)

2:30 PM—4:00 PM **Networking Sessions**
Connect with others in your field from across the country, who share your interests. We will have multiple dynamic meet and greet sessions by diagnosis and by programming topics. Continue your conversations into the cocktail reception and through the week. This is a great way to start your HEAL experience!
Facilitator: Patty Dillhoff, HEAL Co-President
Location: REGENCY BC

Monday, April 29, 2019 — (continued)

Hyatt Regency Cincinnati

2:30 PM—4:00 PM **Cincinnati Children’s Hospital Tour Group #2**
(continued) Jump on the bus and tour some of the highlights at Cincinnati Children’s Hospital main campus (both Tour Group #1 and Tour Group #2 will receive the same tour)
Location: meet in the HOTEL LOBBY (1st floor)

5:00 PM—8:00 PM **Welcome Reception and Dinner**
*Sponsored by: Center for School Services and Educational Research,
Cincinnati Children’s Hospital*
Location: Regency North Foyer & Regency BC

- ◆ **Cocktail Reception**— 5:00-5:45 PM
(cash bar open until 7:30 PM)
- ◆ **Buffet Opens** — 5:45 PM
- ◆ **Awards Presentation** — 6:10 PM
- ◆ **Keynote** — 6:30 PM

Collaboration: A Parent’s Perspective
Susan Shelton
Executive Director, MindPeace

Tuesday, April 30, 2019

Hyatt Regency Cincinnati

7:30 AM **Registration Opens**
Location: Conference Center Lobby

7:30—8:30 AM **Continental Breakfast**
Location: Conference Center Lobby/Regency BC

8:30—9:00 AM **Welcome and Conference Kick Off**
Patty Dillhoff, MAT & Mindy Elliott, NBCT, HEAL Co-Presidents
Dave Krier, MHA, Vice President, Access Services and Family Relations at Cincinnati Children’s Hospital
Location: Regency BC

Tuesday, April 30, 2019

Hyatt Regency Cincinnati

9:00—10:00 AM

Keynote

School Alliances for Children With Chronic and Complex Conditions

Dr. Jennifer Lail, MD, FAAP, AVP Chronic Care in James Anderson Center for Health Systems Excellence, Cincinnati Children's Hospital

Location: Regency BC

10:00—10:15 AM

Break

10:15—11:15 AM

Exploring Implications of Medical-Educational Collaboration for School Success

Both the educational and medical communities know that academic success is key to future life success. The role of educational liaisons in connecting these pieces is demonstrated through our piloted "School Success Clinic," a novel approach for collaboratively addressing medical and educational needs by connecting students with appropriate diagnosis, support, and resources. Our discussion will review some of the key medical comorbidities and differential items from a medical perspective that can help with this process and give participants time to discuss these areas to facilitate future family participation in decision making and communication between these two care systems.

Presenters: Michelle Curtin, DO, FAAP and Kristin Wikel, MEd, Riley Hospital for Children at Indiana University Health

Location: Regency BC

Supporting the Student with Sickle Cell Disease: Promoting Proactive Planning Through the Use of a Comprehensive School-Based Handbook

The role that school personnel play in the care of students with sickle cell disease is vital. However, access to comprehensive resources for school personnel is limited. To address this, a multidisciplinary team from the Children's Hospital of Philadelphia created a comprehensive and user-friendly school-based handbook that contains the latest information on sickle cell disease, promotes proactive planning, and supports the development and implementation of individualized academic action plans for students with this chronic illness.

Presenter: Kaitlin Murtagh, BA, Children's Hospital of Philadelphia, Voorhees Township, NJ

Location: Regency E

Executive Dysfunction Interactive Workshop: Compensatory Strategies and Aides for Supporting Patients with Learning, Behavior, and Attentional Weakness

Students with varying educational, behavioral, and medical diagnoses often have difficulty in executive functioning skills. These skills (planning, organizing, executing, initiating, emotional regulation, attention/memory, etc.) are foundational skills to access academics and cognition. Any deficits or weaknesses in EF ultimately impact classroom performance and skill acquisition. This session will serve as an interactive workshop with brief education on EF support with compensatory external strategies to improve student independent and classroom experience. Participants will leave the session with

Tuesday, April 30, 2019 (continued)

Hyatt Regency Cincinnati

10:15—11:15 AM (continued) the physical tools needed for immediate implementation upon returning to their classrooms/hospitals. Participants will also gain a better understanding of how to include executive functioning in IEP goals, including progress monitoring methods.
Presenters: Erin Austin, MA and Jodi Krause, MA, CBIS, Children’s Health Children’s Medical Center, Aurora, CO
Location: Regency F

11:15—11:30 AM **Break**

11:30 AM—12:30 PM ***What About Us? The Unique Needs of AYA Patients Age 15-22***
 Adolescents and young adult cancer patients face a unique set of challenges. They may be working toward completing their high school years and preparing for college, or beginning to decide on a career path. Then they are hit with a cancer diagnosis, and begin to experience the psychosocial issues that occur during treatment that look very different than a child or adult. This presentation will address the needs and various ways to assist this special group.
Presenters: Kris Frost, MEd, and Pete Stavinoha, PhD, ABP, MD Anderson Children’s Cancer Hospital, Houston, TX
Location: Regency E

Interactive Panel Discussion – Navigating Change in Education in the Ever-Evolving Healthcare System

Healthcare and education each represent complex, ever-changing systems. As these systems evolve, such changes directly impact the work of hospital educators, academic liaisons, and related programming. This session will examine how our field has experienced (and is experiencing) changes within and across these sectors, the direct and indirect impacts of those changes, and how these changes are transforming our programming and delivery of care. The panel discussion will include representation from the hospital teacher, school liaison, and administrative/leadership perspectives.
Facilitators: Megan Elam, EdD, Cincinnati Children’s Hospital, Cincinnati, OH; Beth Stuchell, BS, MSW, CS Mott Children’s Hospital University of Michigan, Ann Arbor, MI
Panelists: Charles Curtin, MEd, Intermountain Primary Children’s Hospital, Boise, ID; Sarah Smith, BA, Helen DeVos Children’s Hospital, Grand Rapids, MI; and Anna Starczynowski, MEd, Cincinnati Children’s Hospital, Cincinnati, OH
Location: Regency BC

Assessing the Learning Outcomes of an Innovative Teaching Program Using Chronically Ill Patients' Experience/Disease as the Springboard for Learning About Science and Math

Our project takes an innovative approach to teach STEM by engaging chronically ill children, who because of their own experiences are primed to learn science and math in the context of their own disease. The assessment learning data indicates that learning is occurring and our program is bringing real value to the patients. Our presentation will

Tuesday, April 30, 2019 (continued)

Hyatt Regency Cincinnati

11:30 AM—
12:30 PM
(continued) discuss in detail the hands-on activities, the learning objectives, and the patient educational outcome assessment questions and results. We have an unprecedented opportunity to impact many children with STEM education starting from what they are already acutely aware of their bodies.

Presenter: Elaissa Hardy, PhD, Emory University, Atlanta, GA

Location: Regency F

12:30—1:30 PM

Lunch

Location: Regency BC

1:00—2:00 PM

Poster Presentations and Vendor/Exhibitor Tables

Location: Regency North Foyer

Bear in the Chair School Reentry Program

The Bear in the Chair program gives children in the classroom an opportunity to communicate with their classmate who is in the hospital. Children in the hospital can often feel isolated and disconnected from their home community; this program is designed to help eliminate these feelings of loneliness by maintaining a connection between children being treated and their school. The Riley Hospital for Children School Program sends a Bear in the Chair to the child's classroom and the bear sits in the child's seat until they return to school.

Presenter: Peggy Green, MEd, Riley Hospital for Children at Indiana University Health, Indianapolis, IN

Depression and Anxiety in Youth with Significant Medical Needs in an Alternative School Setting

Children with significant medical issues are at-risk for mental health challenges. A hospital-based school attempts to offer multidisciplinary care to this population. Program evaluation efforts have been conducted to characterize this population, and understand the impact of the program on emotional health. Results suggest that early assessment and intervention for depression and anxiety should continue, with the ultimate goal of implementing effective mental health interventions to promote academic success and overall well-being.

Presenter: Jennifer Lindwall, PhD, University of Colorado/Children's Hospital Colorado, Aurora, CO

Learning Characteristics of Students with Traditional and Non-Traditional Eating Disorders

Analysis of data regarding patients attending the Center for Pediatric Eating Disorders at Children's Health Children's Medical Center of Plano. Data collected addresses learning characteristics and special needs for students in the eating disorders population. Sample population includes patients age 7-17 years old that were enrolled in public, charter and private school at the time of admission to the program.

Presenter: Anne Bryant, MEd, Children's Health Children's Medical Center Plano, Plano, TX

Tuesday, April 30, 2019 (continued)

Hyatt Regency Cincinnati

1:00-2:00 PM
(continued)

Infant Literacy: An Inpatient Program Supporting the Critical Importance of Daily Read Aloud Time

Book Babies is a clinical program born out of passion and patient need. As educators, we know that strong brain foundations are built starting at birth, and what better way to nurture our youngest students than by fostering a love of reading right from the very start. Book Babies serves patients ages 12 months and younger, and aims to equip caregivers with the education and resources they need to make shared reading time a part of their everyday lives. This poster will share the research that supports the need for this type of clinical program, the details of the program's development, and why all hospital school programs should consider serving their very youngest students.

Presenters: Allison Porter, BS, and Brenda Henne, MS, C.S. Mott Children's Hospital, Ann Arbor, MI

nanatawihowikamik: The Role of Place for Indigenous Youth Mental Health

Place is significant for optimal Indigenous youth mental health. Through understandings from traditional Elders, early career counsellors, and youth, a decolonized theory of place is presented to identify and disrupt the power imbalances embedded in Western health and education structures.

Presenter: Miranda Field, MEd, University of Regina and Regina Public Schools, Saskatchewan, CA

Rocketing to the Future: A Hospital Educator's Guide through the Constellation of Needs of Pediatric Cancer Patients and Survivors

This poster will portray and share with educators the constellation of needs that children and adolescents experience during their cancer journey from the initial diagnosis through survivorship. The poster will depict the various needs based on age of diagnosis and type of diagnosis.

Presenter: Kris Frost, MEd, and Pete Stavinoha, PhD, ABP, MD Anderson Children's Cancer Hospital, Houston, TX

Tool Talk: Tools Used in a Behavioral Health Classroom

This poster presentation will allow attendees to learn about the different tools that we at Children's Health use in our Behavioral Health Classrooms. These tools range from coping items that patient us at their desks (e.g, calm.com, flip cubes) to tools that the Educational Specialists use to assist that patient with classwork (e.g. litcharts, typing.com, and OdysseyWare).

Presenter: Deanna Morgan, BA, Children's Health Children's Medical Center, Plano, TX

2:00—3:00 PM

The Behavioral Health Transition Initiative: Developing a Transition-Planning Framework for the Return to School from Behavioral Health Hospitalizations

Sara Midura from Riley Hospital for Children, Benjamin White and Angie Turner from Unity Center in Multnomah School District, and Brandon Sethi from Cincinnati Children's Hospital have all been educators in the Behavioral Health setting for

Tuesday, April 30, 2019 (continued)

Hyatt Regency Cincinnati

2:00—3:00 PM
(continued)

multiple years. Part of their missions are to ensure successful and supported transitions from the acute care center to school in order to continue the progress of treatment. Each one has assisted in developing a transition plan for their hospitals, and have teamed up together to generalize their plans into a framework to be applied when creating individual plans. This framework is based in neuroscience and best practices.

Presenters: Sara Midura, BEd, Riley Hospital for Children, Indianapolis, IN; Brandon Sethi, MEd, Cincinnati Children's Hospital, Cincinnati, OH; and Benjamin White, MSpEd, Multnomah ESD, Portland, OR

Location: Regency E

Panel Discussion: Exploring the Intersections of Chronicity: School Implications Across a Range of Conditions

Increasingly, there is greater demand for improved communication between hospital and school for youth with chronic and mental health conditions. As the number of children with chronic conditions participating in the traditional school setting increases, services are being requested at higher rates for conditions across the spectrum of chronicity. The purpose of this session is to hear from a panel of providers who can speak to the school implications for patients with a variety of conditions from a medical perspective, with an emphasis on conditions that are not always considered in the allocation of school services at pediatric hospitals, though often in great need of support. The panel discussion will include representation from physicians in pulmonology, neurology, and physical medicine and rehabilitation. Participants will be invited to share their questions with panelists at the conclusion of the session.

Facilitators: Kenny Haber, MEd and Lenora Nardelli, MEd, Cincinnati Children's Hospital, Cincinnati, OH

Panelists: Thomas F. Boat, MD, Brad Kurowski, MD, MS, and J. Michael Taylor, MD, Cincinnati Children's Hospital, Cincinnati, OH

Location: Regency BC

Increasing Access to College and Career Support for Patients

For the adolescent and young adult patients in a treatment center, it is imperative that we treat the whole patient by providing the college and career support that gives them hope for their independent future. Vocation focused groups support a full transition from treatment-centered days to life in recovery. As their care team, we can provide our patients with the tools for success and the soft skills for growth in a supportive environment.

Presenter: Katherine Elaine Toman, MS, Veritas Collaborative, Richmond, VA

Location: Regency F

Tuesday, April 30, 2019 (continued)
Hyatt Regency Cincinnati

3:00—3:15 PM

Break

3:15—4:15 PM

The Development of an Educational and Vocational Needs Survey for Adults with Childhood-Onset Chronic Health Conditions

The development of a survey designed to ascertain the self-reported educational and vocational needs of adults with childhood-onset chronic health conditions in the pediatric healthcare setting will be shared. The content evaluation process used to validate the Post-Secondary Educational and Vocational Needs Survey according to Lawshe (1975) and Davis (1992) will be described, as well as the results (descriptive statistics) from the pilot study evaluating the needs of 15 adult pediatric brain tumor survivors.

Presenter: Christel Murphy, EdD, Cincinnati Children's Hospital, Cincinnati, OH

Location: Regency E

Key Educational Factors for the Education of Students With a Medical Condition

The key educational factors that can help children continue their education despite the burdens associated with their illness were discussed and analysed by a pool of experts for an EU funded project called Leho (Learning at home and in the Hospital). In this context, relationships, making sense and constructing knowledge, assuming roles in front of others, metacognition, individualities and inter-institutional communication emerged as crucial aspects for the education of this vulnerable population. This presentation illustrates how such factors can be used both at an institutional, classroom and student level.

Presenter: Prof. Michele Capurso, University of Perugia, Perugia, IT, and Prof. John Dennis, Università Cattolica del Sacro Cuore, Rome, IT

Location: Regency BC

Chronic Health Conditions and Executive Functioning: Strategies for Math Education

Research shows that executive functioning skills are impacted by chronic and mental health conditions. These skills are necessary for math proficiency. As hospital educators, we are uniquely positioned to implement and practice strategies during our math lessons to improve executive functioning. We can then disseminate successful strategies and learnings back to classroom teachers during hospital-to-school transitions in order to help change the outcome for these students.

Presenter: Kari Stewart, BS, Cincinnati Children's Hospital, Cincinnati, OH

Location: Regency F

Wednesday, May 1, 2019

Hyatt Regency Cincinnati

7:30 — 8:30 AM

Continental Breakfast

Location: Regency North Foyer or Regency E

8:00— 9:00 AM

HEAL Business Meeting

Location: Regency BC

9:00—9:30 AM

Networking

9:30—10:30 AM

A Strong Volunteer Program Helps Power the Hospital School

Maintaining a strong volunteer program greatly enhances the services a hospital school can provide. A hospital school program can expand the amount of academic support available to patients by building a qualified, reliable team of volunteers. This presentation provides an adaptable framework to establish a hospital school volunteer program. Using the tools and strategies presented here to plan and implement an effective volunteer program, hospital school teachers can increase the number of patients served and the amount of time spent with patients while staying within the current school budget.

Presenters: Michelle Goedde, BS and Brenda Wilson, MAT, Cardinal Glennon Children's Hospital, St. Louis, MO

Location: Regency E

Get Published! The Path to Publication in the New International Journal, Continuity in Education

Would you like to have your expertise shared with others across the globe in an international journal? HEAL partnered with three other associations from around the world to create the journal, *Continuity in Education*, which is the first international journal focused on the medical and mental health needs of students. This interactive workshop will highlight the steps necessary for attendees to share their experience and knowledge related to work with this unique population through journal article submissions. Whether you are seasoned in publishing work or this is your first time ever dreaming of writing for a journal, please join us to learn more.

Presenters: Prof. Michele Capurso, University of Perugia, Perugia, IT; Mindy Elliott, NBCT, Veritas Collaborative, Durham, NC; Debra Giugliano, RN, MS, CPNP, CPON, Stony Brook Children's Hospital, Stony Brook, NY

Location: Regency F

Educational Implications for Students with Brain Injuries

Brain injuries can occur by multiple mechanisms and present with a broad spectrum of severities. Such injuries cause deficits, including motor, speech, or cognitive impairment. Some of these deficits can be "invisible," such as attention difficulties, executive dysfunction, cognitive fatigue, or social dysfunction, and often persist long after other impairments have improved. Recognizing these challenges can help caregivers and educators understand how best to help students with brain injuries maximize their educational achievement and social behavioral learning.

Presenters: Jennifer R. Frey, PhD, BCBA-D, The George Washington University, Washington DC and Nathan Evanson MD, PhD, Cincinnati Children's Hospital, Cincinnati, OH

Location: Regency BC

Wednesday, May 1, 2019 (continued)

Hyatt Regency Cincinnati

10:30—10:45 AM **Break**

10:45 AM—
12:15 PM **Closing Session**

Navigating Change: What is Your True North, and How Do You Get There?

Presenters: Megan Elam, EdD, and Paul Henkel, MBA, Cincinnati Children's Hospital
Cincinnati, OH

Location: Regency BC

12:15—12:30 PM **Closing Remarks, Evaluations and Adjournment**

Location: Regency BC

12:30—1:30 PM **Boxed Lunch (Eat In or To Go)**

Location: Regency BC

Get support. Reach out to our

INFORMATION SPECIALISTS

The Leukemia & Lymphoma Society team consists of master's level oncology social workers, nurses and health educators who are available by phone Monday through Friday, 9 a.m. to 9 p.m. (ET).

- Get one-on-one personalized support and information about blood cancers
- Know the questions to ask your doctor
- Discuss financial resources
- Receive individual clinical-trial searches

Contact us at **800-955-4572**
or **www.LLS.org/InformationSpecialists**

(Language interpreters can be requested)





Susan Shelton

Executive Director

MindPeace

Susan Shelton graduated from Vanderbilt University with a BSEE, and she attended the University of Cincinnati, completing her MBA. She worked in high tech industries for 20 years in the areas of research and development, product management, marketing, and strategic planning. Susan was a founder of MindPeace as a volunteer of the Junior League of Cincinnati (JLC) and under Susan's leadership, MindPeace earned numerous awards and national recognition including the Association of Junior Leagues International (AJLI) first ever Award for Collaboration and Ohio's Best Small Non-Profit to the JLC for MindPeace. She changed careers and became the Executive Director of MindPeace when it became a non-profit organization.

Susan is currently a trustee for the Junior League of Cincinnati Endowment, the Convalescent Hospital for Children and Cincinnati Children's Hospital Medical Center. She has been a Board Member of the Council on Child Abuse (COCA), the Junior League of Cincinnati, NAMI of Hamilton County and the Walnut Hills High School Association, and she co-chaired BRAVO!, the volunteer arm of the Cincinnati Ballet. She was the President of the Junior League of Cincinnati and of the Walnut Hills High School Association. Susan has been honored with personal awards including the Community Friend of Mental Health Award by the Hamilton County Mental Health and Recovery Services Board, the Community Activist Award by Cincinnati Children's Hospital's Division of Child & Adolescent Psychiatry, Community Outreach Finalist for Health Care Heroes, the Jake Ober Award by the Cincinnati Mood Disorders Consortium, and the Award in Excellence for Leadership in a Community Setting by NAMI of Hamilton County.



Dr. Jennifer Lail, MD, FAAP

AVP Chronic Care Systems

James Anderson Center for Health Systems Excellence

Cincinnati Children's Hospital Medical Center

Since 2012, Dr. Jennifer Lail has served as AVP for Chronic Care Systems in the James Anderson Center for Health Systems Excellence at Cincinnati Children's Hospital Medical Center (CCHMC). Dr. Lail partners with CCHMC's physicians, staff and families of children and youth, applying Quality Improvement strategies to improve outcomes in chronic and complex diseases. She led the Condition Outcomes Improvement 2015 Strategic Plan Initiative, where 29 teams worked to improve clinical and functional outcomes for 13,601 children with chronic conditions, using registries for population support and care management, and reliably applying evidence-based care. Dr. Lail has worked as a primary care pediatrician for patients in CCHMC's Complex Care Clinic, leading strategy and quality improvement there, culminating in NCQA Patient-Centered Medical Home recognition in 2018.

Previously, she practiced primary care in Chapel Hill, North Carolina with a particular interest in the health care delivery for children with special health care needs (CSHCN). Implementation of practice strategies that improve care for children and youth with chronic/complex conditions has been her particular interest, including development of clinical registries, care coordination programs, family engagement, pre-visit care planning, improved communications with subspecialists and transition planning for CSHCN. She is a current member of the AAP's Council on Children with Disabilities, the Quality Improvement Innovation Network, and CCHMC's Ambulatory Leadership Council. She serves as Faculty Advisor for the Sickle Cell Treatment and Outcomes Research in the Midwest groups and serves on the Advisory Committee for the National Resource Center for Implementation of the Patient and Family Centered Medical Home. She is also on advisory committees for the CYSHCNet National Research Network and Boston University's Collaborative for Improvement and Innovation Network to Advance Care for Children with Medical Complexity.

Erin Austin received her Master's from the University of Colorado, and is a licensed special education teacher that taught for 8 years in the public school system. She is currently the school teacher for the Rehabilitation Unit, specializing in the treatment and school reintegration process for children with Traumatic Brain Injury (TBI) and Spinal Cord Injury (SCI). Erin also provides bedside instruction and care coordination services for children recovery from surgery or trauma, as well as children on the CICU, CPCU, and PICU floors.

Thomas F. Boat, MD trained in pediatrics and pulmonary medicine at the University of Minnesota, the National Institutes of Health, and Case Western Reserve University (CWRU). His first faculty appointment at CWRU (1972-1982) focused on cystic fibrosis (CF) lung dysfunction research related to abnormal mucus in airways and to improving CF care. Dr. Boat next assumed the Chair of the Department of Pediatrics at the University of North Carolina (1982-1993) followed by appointment as Chair of Pediatrics and Research Foundation Director at Cincinnati Children's Hospital (1993-2007). He served as Chair or President of the American Board of Pediatrics (ABP), the Society for Pediatric Research, the American Pediatric Society, and was the American Pediatric Society's Howland Award recipient in 2018. After serving as Dean of the UC College of Medicine, Dr. Boat returned to Cincinnati Children's Hospital in 2015 as Director of CF WELL, a learning and education center to promote wellness, quality of life and better health for CF patients and their families. Dr. Boat served as a member of the Board of Children, Youth and Families of the National Academy of Medicine (formerly the Institute of Medicine [IOM]) and has authored six IOM reports addressing physical and behavioral dimensions of child health. In these roles, he has championed pediatric medicine's promotion of safe and nurturing families as important for lifetime health and wellness.

Anne Bryant is an Educational Specialist certified in Special Education, English as a Second Language, and Generalist for grades EC-8. Anne holds a B.S. in Human Development and Family studies, and an M.Ed. in Elementary Education from Texas Tech University. Prior to working with Children's Health, Children's Medical Center at "Plano in the Center for Pediatric Eating Disorders, Anne taught at an international school in

Colombia, South America, and a public elementary school in Lewisville, Texas. Anne is also the secondary handler for Children's Health facility dog, Patton, who is a golden lab assistant.

Michele Capurso is a researcher and lecturer in Educational psychology at the University of Perugia, Italy. He started his career in 1990 as a primary school teacher and then worked as a hospital teacher in the beautiful Umbria region, Italy. Later, he served as Head of the Practical Teacher Training programs at the University of Perugia, where in 2004 he became researcher. Capurso has published several books and articles on children's fears and coping, understanding of illness, didactics and communication. On the same subjects he has been invited to share his experience and research in different meetings and conferences all over the world. He has been a member of the Board of HOPE (Hospital Organization of Pedagogues in Europe) for eight years, and President for two. He is currently serving as scientific board member on several associations in the field of children development and education. He is Editor-in-Chief of the *Continuity in Education* journal.

Charles (Chuck) Curtin serves as the Educational Director of School Services at Primary Children's Hospital located in Salt Lake City, Utah. Chuck has worked to educate patients, parents, caregivers, and school personnel what accommodations a child requires to be safe and successful when they return to school from their hospital stay. He is a member of the Utah Brain Injury Council where his focus is to increase awareness and knowledge of academic and activity accommodations when a student returns to learn after they have been diagnosed with a Traumatic Brain Injury. Additionally, he is an board member of the Literacy Action Center, an organization that helps English-speaking adults who read below a fifth grade level become skilled readers. Previously, he has worked with the State of Utah to help children with significant barriers to education achieve their diploma and enroll in post-secondary education training.

Michelle Curtin, DO FAAP is a subspecialty trained Developmental-Behavioral Pediatrician who is currently faculty at Riley Hospital for Children-Indiana School of Medicine. She is a passionate medical educator and loves working with families. She recently started the first

School Success Clinic in Indiana to support primary care medical teams and partner with local educators for childhood school success. Dr. Curtin has a Bachelor's of Arts in English from Xavier University and a Doctor of Osteopathic Medicine from New York College of Osteopathic Medicine.

John L. Dennis is a Behavioral Scientist, who does research on how people intentionally influence their lives. He is a CHEI Affiliated Professor, and an Adjunct Professor at the University of Perugia, and several other institutions. He's interested in helping students develop the analytical skills required for understanding, practicing, and benefiting from research. Within international education, he is interested in the student experience and takes an evidence-based approach to understand how theories, models, research, and data relate to those experiences. In his spare time he runs his own company that measures student experiences in international settings, is a Cognitive Behavior Therapy practitioner, and is writing a book entitled *The Importance of Feeling Uncomfortable*.

Megan Elam serves as Director of the Center for School Services and Educational Research at Cincinnati Children's Hospital and Adjunct Instructor at the University of Cincinnati. To date, Elam has invested in improving educational outcomes for students with chronic health conditions, working to transform the educational landscape for this growing population of students through national presentations, publications, teacher training, innovative research, and examination of policies and mandates in the field. Elam has served in numerous national leadership roles, including President of CEC's Division of Physical, Health, and Multiple Disabilities and Chair-Elect of APHOES.

Mindy Elliott developed the academic programming for Veritas Collaborative, a specialty healthcare system for the treatment of eating disorders with locations in NC, GA and VA. She currently serves as the Director of Education and Quality Programming for Veritas and Co-President for HEAL. In 2017, discussions on the development of a new international journal began with the European organization, HOPE. Mindy represented AECMN, and later HEAL, in the formation of the journal, *Continuity in Education (CiE)*, which expects to publish its inaugural online edition in early 2020. Mindy is an Associate Editor for the journal, *CiE*.

Nathan Evanson received his MD and PhD from the University of Cincinnati Physician Scientist Training Program. He trained as a pediatric physiatrist with the combined residency program in pediatrics/physical medicine & rehabilitation at the University of Cincinnati and Cincinnati Children's Hospital. He is currently an assistant professor of pediatrics in the division of Pediatric Rehabilitation Medicine at Cincinnati Children's Hospital. His clinical practice is focused on outpatient rehabilitation treatment of children with acquired brain injuries. In addition, he directs a basic science research program investigating how brain metabolism changes in chronic traumatic brain injury, and mechanisms of optic nerve injury in head trauma, using animal models.

Miranda Field is a K-12 and post-secondary educator who has spent the last ten years working with high risk youth in both rural and urban hospital and school environments in Saskatchewan, Canada. Currently, Miranda is completing her PhD at the University of Regina in Educational Psychology focusing on decolonizing practices for Indigenous mental health.

Jennifer Frey is the director of the Early Childhood Special Education Graduate Program and an associate in the Center for Health and Health Care in Schools at The George Washington University. As a Board Certified Behavior Analyst-Doctoral Level and a formerly certified teacher in early childhood special education and licensed early intervention specialist, Dr. Frey works with physicians, parents, teachers, and children to examine the effects of strategies used to support and enhance communication and social behavioral development across settings. Her research addresses fundamental questions regarding the mechanisms of cognitive, language, and behavioral development and the identification of meaningful phenotypic and neurological variability within and across populations with an overarching goal to improve long-term language and social behavioral outcomes. More specifically, she seeks to understand factors that influence early development and identify predictors of response to treatment in order to adapt interventions to meet the unique needs of individual children. Her research has been published in the fields of special education, pediatrics, psychology, and speech-language pathology.

Kris Frost is a graduate of the University of Texas at Austin where she received a Liberal Arts degree. She began her teaching career in the public school setting teaching children with special needs. She began her career at M D Anderson in 2009 in the Pediatric Education and Creative Arts Program. As a school re-entry coordinator she provides a variety of services to school aged patients to ensure that they are successful when they return to the school setting. She currently follows all school aged children in the Neural, Non-neural, Neurofibromatosis, AYA, and Survivorship clinics.

Debbie Giugliano is the Director of the School Intervention and Re-Entry Program at Stony Brook Children's. She is a certified pediatric oncology nurse practitioner, who began her nursing career 29 years ago at Stony Brook. Debbie is also a Clinical Assistant Professor, teaching pediatrics to undergraduate nursing students at the Stony Brook University School of Nursing. Debbie was a founding member of the Association of Pediatric Hematology Oncology Educational Specialists. She is the recipient of many grants, totaling more than 500 K that have supported and expanded the school re-entry program over the years. She is currently working on her PhD in Stony Brook's School of Nursing.

Shelly Goedde is a hospital-based teacher at SSM Health Cardinal Glennon Children's Hospital in St. Louis, Missouri. She teaches patients in all units of the hospital including dialysis and the hematology/oncology clinic. Shelly has a lifetime teaching certificate and 20 years of educational experience as an elementary school teacher, a middle school teacher, and a parent educator in the Parents as Teachers program where her responsibilities included performing developmental screenings and providing resources to families. Shelly will complete her Masters in Reading from Webster University in 2019. She is passionate about teaching children and helping each child find success.

Peggy Green is an educational liaison at Riley Hospital for Children at Indiana University Health. She holds a Master's Degree in Education. Peggy has 4 1/2 years of experience working with school aged patients in a hospital setting, and 4 years of experience teaching 4th grade in a traditional classroom setting. Peggy provides educational advocacy services to patients on the Hematology/Oncology, Stem Cell and PICU(s) units at Riley.

Kenny Haber is a School Liaison in the Center for School Services and Educational Research at Cincinnati Children's Hospital Medical Center in Cincinnati, Ohio. He received his BA in International Relations and Diplomacy from The Ohio State University and his M. Ed. in Secondary Education from Xavier University. He began his teaching career serving students with emotional and behavioral disorders. Since returning to Cincinnati Children's in 2017, he has primarily worked with the sickle cell population.

Elaissa Hardy is an instructor in Dr. Wilbur Lam's laboratory in the Department of Pediatrics at Emory University and work in the Wallace H. Coulter Department of Biomedical Engineering at Georgia Tech. Her background is in Electrical Engineering and microelectronic fabrication. In addition to hematologic research, she has a passion for teaching undergraduate students and K-12 students through her in-depth involvement in BME HealthReach, an educational outreach program for chronically-ill patients where they are taught math and science through innovative hands-on activities using their own illness as the springboard for learning. The program also enables the Georgia Tech undergraduate student to develop the curriculum (following state and national educational standards) and implement the program.

Paul Henkel is Director of Quality Improvement Consulting at Cincinnati Children's Hospital Medical Center in Cincinnati, Ohio, USA. He received a BS in Oceanography from the United States Naval Academy and an MBA from the University of Michigan. He served for ten years as an Officer in the United States Navy in a variety of aviation roles. He then transitioned to Operations Management in the Retirement Services Industry, directing back office transaction processing for corporate retirement plans. Next, he began his career in healthcare by serving as the VP of Operations for Schulman Institutional Review Board. Finally, Mr. Henkel has been directing quality improvement work with Cincinnati Children's for over six years.

Brenda Henne is currently the School Liaison/Educational Specialist within the University of Michigan Congenital Heart Center at C. S. Mott Children's Hospital | Michigan Medicine and has a long standing commitment for providing exemplary educational services for children

with the greatest needs - currently for children with complex chronic health needs. Brenda's work focuses on the opportunity to develop collaborative partnerships benefitting patients, families and our school and community based colleagues. As a classroom teacher, building and district level administrator, and educational consultant, she has detailed experience designing and implementing services for a variety of stakeholders to accomplish specific program goals.

Jodi Krause is the Brain Injury Education Coordinator for the Department of Rehabilitation at Children's Hospital Colorado (CHCO). A previous public and private school special educator, Jodi transitioned to CHCO in 2010 with the Learning Services Department as a diagnostician and outpatient Learning Specialist for students with language based learning disabilities. Over the next few years Jodi expanded her role on the inpatient team as a bedside teacher for students with chronic medical illnesses. It became clear in this time that the rehab population, students with brain and spinal cord injury in particular, would benefit from a group model. In 2012, Jodi started the first multidisciplinary classroom on a major medical unit at CHCO on the rehab floor that is now part of a patient's rehab treatment protocol. In 2017 Jodi was given the awesome opportunity by the Department of Rehabilitation to continue building this role to include community outreach and reintegration efforts.

Brad Kurowski, MD, MS is a rehabilitation medicine physician with subspecialty certification in Brain Injury Medicine and Pediatric Rehabilitation Medicine. He is interested in how medical, behavioral, physical therapy, lifestyle, and other interventions, individually and in combination, can be used to facilitate short and long-term recovery and brain health. Currently, Dr. Kurowski is an associate professor and co-director of the Brain Recovery after INjury (BRAIN) Health and Wellness

Center at Cincinnati Children's Hospital Medical Center within the Departments of Pediatrics and Neurology and Rehabilitation Medicine at the University of Cincinnati College of Medicine.

Jennifer Lindwall, PhD, is a pediatric psychologist at University of Colorado/Children's Hospital Colorado. She primarily works at the hospital's school program for youth with significant medical needs such as cancer, type 1 diabetes, and pre/post solid organ transplant. Dr.

Lindwall also works in a multidisciplinary clinic for youth with multiple sclerosis, and assists in clinical research targeted at improving adherence in youth and young adults with cystic fibrosis. Dr. Lindwall's overarching goals are to promote psychosocial well-being, quality of life, positive coping, and academic success in children and adolescents with significant medical issues.

Sara Midura is the Educational Liaison on the Simon Skjodt Adolescent Behavioral Health Unit at Riley Hospital for Children. She is certified in Applied Educational Neuroscience, and works with Dr. Lori Desautels, renowned speaker in the world of Educational Neuroscience and Social-Emotional Learning in schools, to implement Educational Neuroscience research and strategies in schools in order to support students with Behavioral Health needs. Sara is passionate about spreading this work in Indiana through multiple local and state initiatives she is part of, and working with HEAL to spread the transition work at a national level alongside of Brandon, Ben, and Angie!

Deanna Morgan is a certified Educational Specialist at Children's Health, Children's Medical Center at Plano in the Center for Pediatric Eating Disorders. Deanna has worked with eating disorder patients for the past 10 years. Prior to her tenure as a teacher she was a milieu therapist. Deanna holds a B.A in Psychology and an associate's degree in counseling. Deanna is a passionate advocate for patients who have an eating disorder in schools. Deanna is fulfilling Children's mission "making life better for children" by ensuring that schools in North Texas and beyond understand the impact that an eating disorder can have on education.

Christel Murphy serves a School Services Senior Specialist and Research Program Manager in the Center for School Services and Educational Research at Cincinnati Children's Hospital. Dr. Murphy is an experienced educator and researcher, dedicated to improving educational outcomes for students with chronic health conditions. She is engaged in various research projects and initiatives to support the educational and vocational quality of life for children and adolescents who are chronically ill. Dr. Murphy has been a member of several national organizations dedicated to the educational quality of life for children with chronic health conditions for several years.

Kaitlin Murtagh is the Outpatient Education Coordinator with The Valerie Fund's Hematology/Oncology clinic at the Children's Hospital of Philadelphia Voorhees Specialty Care Center. She completed her undergraduate degree from The College of Saint Elizabeth and is currently pursuing a MAED through Michigan State University. During the ten years she spent as a special education teacher, Kaitlin has worked with diverse populations of students, including at-risk and chronically ill youth. Kaitlin's role as the Outpatient Education Coordinator is to assist patients with the organization, planning, and delivery of educational support services so that they can remain active members of their school communities throughout treatment.

Lenora Nardelli is a graduate of the University of Cincinnati where she received a Bachelor of Science in Education and a Master of Education in Special Education. She began her teaching career in the public school setting and taught at the primary level for 11 years. In 2017, she transitioned to the Center for School Services and Educational Research (CSSER) at Cincinnati Children's Hospital Medical Center, as a School Liaison Specialist, primarily serving the patients and families in the neuro-oncology department. In addition to serving as a school liaison, Lenora is also passionate about the summer camp program for the patients in the Cancer and Blood Disease Institute at Cincinnati Children's Hospital, and continues to facilitate planning and programming for the summer camp. Lenora also serves on the professional development committee in the CSSER, striving to educate and empower the school partners in the greater Cincinnati area.

Allison Porter is a public-school teacher turned hospital educator, who now serves the youngest patients at C.S. Mott Children's Hospital as a teacher in their Hospital School Program. Allison values the interdisciplinary setting of the hospital and enjoys co-treating with other specialists to best help nurture a love of reading and learning in her students. Allison's biggest passion is early literacy, which has led her to collaborate with colleagues and community partners to plan, design, and implement a new clinical program, Book Babies, which serves infants and their families.

Brandon Sethi is a school liaison at Cincinnati Children's Hospital through the Partial Hospitalization Program at the Lindner Center of Hope campus where he

has been since 2013. His role is to support students transitioning back to school following a hospitalization. His background is as a social studies teacher in both urban and alternative school settings.

Sarah Smith is the Dick and Linda Antonini Endowed Hospital Teacher/School Liaison at Helen DeVos Children's Hospital (HDVCH) in Grand Rapids, Michigan. Sarah has over twenty years of experience in education. She has been serving in this role since 2011, advocating for the academic needs of children with chronic conditions. She helped develop HDVCH's first Teen Council and implemented an elementary group school program to aid the hospital in better meeting the needs of all patients. In addition to her work at HDVCH, Sarah collaborates with her national peers to help support this growing profession by having served on the executive boards of the Association for the Education of Children with Medical Needs (AECMN) and the Association of Hematology Oncology Educational Specialists (APHOES). In 2017, she was the recipient of the Nan Songer Distinguished Member Award, and now serves on the Hospital Educator and Academic Liaison Association (HEAL) Executive Board as Vice President.

Anna Starczynowski, MEd is a School Liaison Specialist at Cincinnati Children's Hospital and has been supporting oncology and bone marrow transplant patients since 2014. Anna is dedicated to supporting families and schools navigate the challenges associated with a chronic illness and the impact on school. Her role involves educating the school team and peers regarding diagnosis, treatment, educational implications, and recommendations for appropriate supports. Prior to her job at Cincinnati Children's Hospital, Anna worked as a 3rd grade teacher in Boston, MA.

Pete Stavinoha, PhD, ABPP is a pediatric neuropsychologist and Professor in Pediatrics at the University of Texas MD Anderson Cancer Center. He provides neurocognitive and academic assessment for possible late effects of cancer treatment. In his clinical practice and in research endeavors, he is interested in the intersection between neurocognitive function and school performance in pediatric brain tumor survivors, and particularly how to tailor supports for maximum benefit for children experiencing cognitive late effects of treatment.

Kari Stewart is a Hospital Teacher at Cincinnati Children's. Mrs. Stewart has a passion for working with students with chronic health conditions, especially cancer and blood diseases, where she has served as a key member of the Solid Tumor, Leukemia/Lymphoma, and Bone Marrow Transplant Psychosocial Teams. As a sibling of a pediatric leukemia survivor, Kari is particularly interested in initiatives to support siblings of students with chronic conditions, as evidenced in her participation as co-investigator in the current research study Sibling Support Through Caregiver Education (PI: Smith, Elizabeth). She has a degree in Mathematics and Secondary Education from Northern Kentucky University, where she continues to visit and speak to future math educators about teaching hospitalized students. In the spirit of keeping her math skills sharp, Mrs. Stewart also tutors local middle- and high-school students in their math courses and in preparation for the ACT, using study materials she has developed that organize ACT Math test questions by sub-topic. Her hobbies include playing piano, singing, and distance running. She lives in Cincinnati, OH, with her husband and son.

Beth Stuchell is the School Intervention Specialist for the Pediatric Hematology, Oncology, Blood and Marrow Transplant Program at Michigan Medicine's C.S. Mott Children's Hospital. Beth began her professional career as an elementary and middle school teacher, then obtained a Master's degree in social work. Beth first worked as a clinical, medical social worker at Michigan Medicine with adults, then transitioned to pediatrics in the HemOnc and Transplant Program. Beth took on the role of a School Intervention Specialist in December, 2013. Areas of interest include oncology survivorship, addressing health-related barriers to educational and vocational opportunities in the AYA population and fostering multi-disciplinary research collaborations.

Michael Taylor is a child neurologist at Cincinnati Children's Hospital Medical Center where he has worked since 2013 on the faculty of the University of Cincinnati College of Medicine. His clinical expertise is in the care of children with acquired brain injury with specific attention to acute stabilization in the intensive care unit, novel approaches to stroke treatment in children, and long-term management of severe traumatic brain injury.

His research focuses on cerebral vascular development, pediatric stroke epidemiology, and outcomes after brain injury. Dr. Taylor is committed to getting his patients all the way from the trauma bay to the classroom, returning the learner to their future.

Katherine Toman is the Education and Vocation Coordinator for Veritas Collaborative in Richmond, VA. She spent the beginning of her career educating a wide range of students in Mathematics, and in January 2017, she jumped into the mental health field in order to be the most effective resource for students and patients. She dedicated the last two and a half years advocating for the child and adolescent patients at Veritas. During this time, her focus has broadened to include the needs of the young adult and adult patients, and she has helped lead the development of vocational resources and career-focused groups. She hopes to continue this project in an effort to continue to provide well-rounded, best practice care for the patients and families.

Benjamin White is a Hospital Teacher/Educational Liaison in an acute inpatient adolescent psychiatric unit at The Unity Center for Behavioral Health in Portland, Oregon. He's been involved with HEAL since he attended his first AECMN/APHOES conference in 2014, where he finally found his tribe. Surrounded by vibrant educators working in non-typical settings driven by curiosity and improvement in an emerging field - he was home! In his 12th year of partnering with students with significant trauma and mental health needs, Benjamin continues to dive deeper and pursue improved practices, processes and partnerships in this fledgling field.

Kristin Wikel is the manager of the Riley Hospital for Children School Program at Indiana University Health. She holds a Master's Degree in Special Education and is currently attending Ball State University to obtain her Director of Exceptional Learners' License. Kristin and her team of 11 fully licensed educational liaisons provide all the education and advocacy services to hundreds of very deserving Riley kids every year. Kristin was awarded the Indianapolis Business Journal's Healthcare Hero of the Year in 2016 (non-physician category) for her educational advocacy efforts.

Brenda Wilson is a teaching specialist at SSM Health Cardinal Glennon Children's Hospital in St. Louis where she serves as a teacher and school liaison. She earned her Master's Degree in Teaching at Webster University. In 24 years of teaching, Brenda has taught or tutored grades PreK through high school. When she joined Cardinal Glennon in 2014, there was no school, so her purpose was to develop the hospital's inpatient school program which she determined would also include dialysis and the hematology/oncology clinic. Brenda works with patients throughout the hospital, whatever their diagnosis. She also serves as an educational advocate.

Thank you to our vendors:

- **Aaron W. Perlman Center, CCHMC**
- **Project Search**
- **Leukemia & Lymphoma Society**

Thank you to our sponsors:

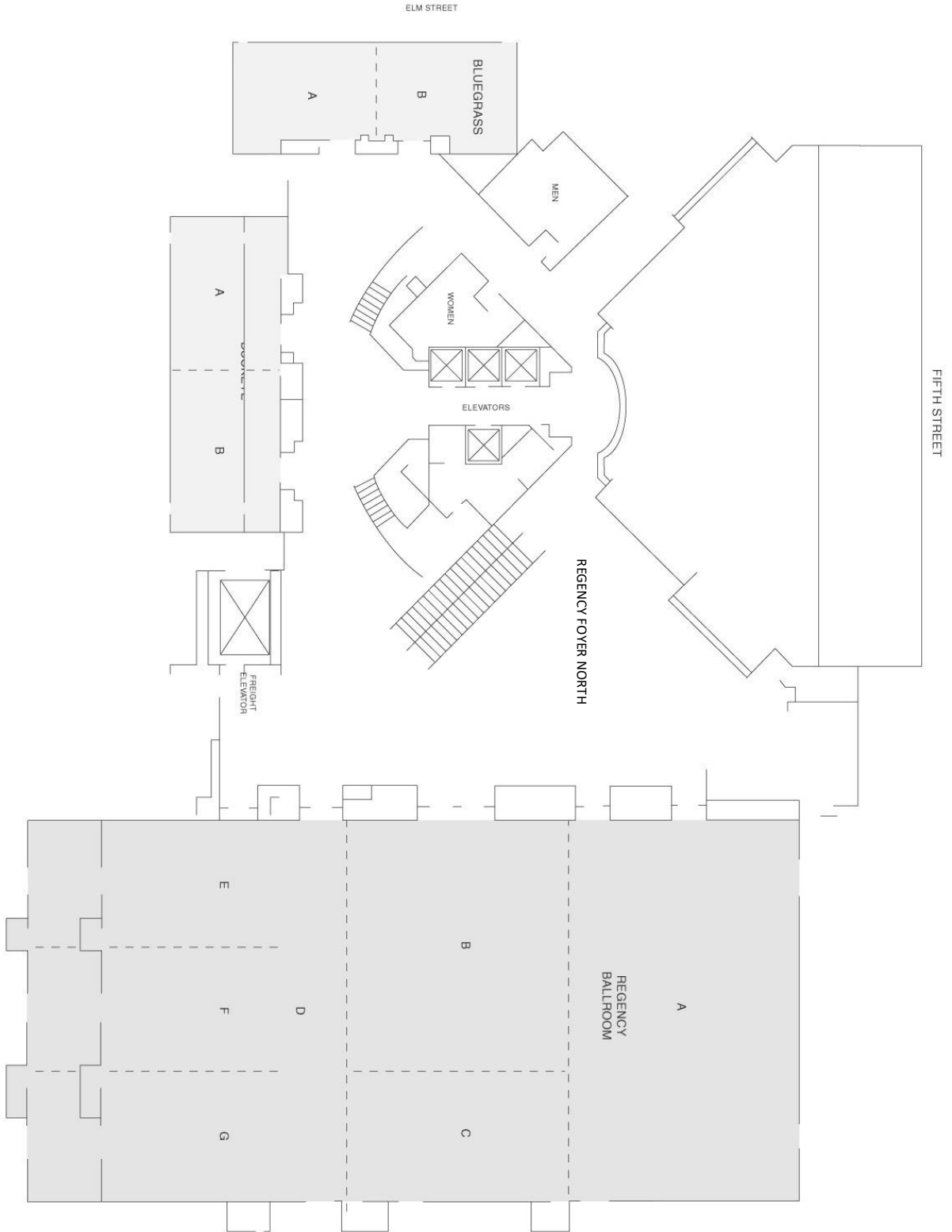
Gold Level Sponsor



Silver Level Sponsor



THIRD FLOOR



Hosted by:
Center for School Services and Educational Research

