



SHINING LIGHT ON EDUCATIONAL SUCCESS

May 2—May 4, 2017 | St. Petersburg, Florida

Presented By:

*The Association for the
Education of Children with
Medical Needs*

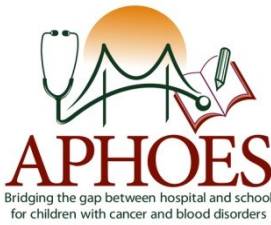
and

*The Association of Pediatric
Hematology Oncology
Educational Specialists*

**A Joint National Conference
for professionals working together to address
the educational needs of pediatric patients.**



Letter from Local Host, AECMN and APHOES



May 2, 2017

Dear Conference Participants,

On behalf of the local planning committee and the executive boards of APHOES and AECMN, we would like to thank you for attending the fourth annual Joint National Conference of APHOES and AECMN and welcome you to St. Petersburg! We hope you will enjoy its vibrant downtown, stunning waterfront views, and beautiful weather.

Over the next few days there will be many opportunities for building relationships with other professionals who are supporting the educational needs of students with chronic and acute medical conditions. We hope you will find colleagues with whom you can share information and resources, along with conference sessions that are informative and enjoyable. If you are not already a member of APHOES and/or AECMN, please consider joining the organization that best aligns with your interests (or both!), so you can benefit even further from collaboration and connection throughout the year.

Please take time to visit all of the exhibitors who have invested in us and have resources to share. They will be available throughout the day on both Wednesday and Thursday. The exhibitor booths will be located in the lobby outside the St. Petersburg Ballroom.

If you have any questions or concerns during the conference, please contact Alicia Riggs at 727-767-4130 (office) or email at ariggs1@jhmi.edu.

We hope you enjoy your time in St. Petersburg and that you find many opportunities to learn and network during the conference. Welcome to the Sunshine City!

Alicia Riggs

Local Conference Chair
Coordinator Patient Academics
Johns Hopkins All Children's Hospital

Lisa Northman, Ph.D.
Chair, APHOES Executive Board
Senior Psychologist, School Liaison Program
Dana-Farber Cancer Institute

Samantha Shea
President, AECMN Executive Board
Hospital-Based Teacher
Columbus City Schools | Nationwide Children's Hospital

Thank You and Additional Information

A big **THANK YOU** to the local conference planning committee and the joint conference planning committee for all the hard work that went into planning this event.

Local Planning Committee

Alicia Riggs, Patient Academics Services Coordinator and Local Committee Chair

Kayla Anderson, Hospital School Teacher

Kate Helck, Hospital School Teacher

Joint Conference Planning Committee

Samantha Shea, Co-Chair, AECMN President

Patty Dillhoff, Co-Chair, APHOES Marketing and Communications Officer

Sarah Smith, AECMN Secretary

Joni Hildreth, APHOES Secretary

Brandon Sethi, AECMN Treasurer

Courtney Emory, APHOES Treasurer

Nicole Gutman, APHOES Vice Chair

Laurie Leigh, Past Local Committee Chair

Credit Hours

A Certificate of Attendance will be provided for all attendees following the conference. Graduate credit hours will be available through the University of Cincinnati. Information will be available on the AECMN APHOES Joint Conference website.

Special Needs

In accordance with The Americans with Disabilities Act, AECMN and APHOES will take the necessary steps to ensure that no individual with a disability is excluded or denied services. Please contact the Conference Planning Committee at least two weeks prior to your arrival with any special requests.

Conference Email

AECMNAPHOESConference@gmail.com



History

The idea to establish a national organization of professionals who assist in educating children with medical needs was set in motion at the 1999 Association for the Care of Children's Health (ACCH) meeting. ACCH provided a forum for hospital teachers to meet and network. During the ACCH conferences, networking sessions were included for various professionals to break-off in discussion or networking groups. At the 1999 conference in Long Beach, CA, the teachers who attended the networking session expressed the desire to have an independent organization of hospital teachers.

ACCH was disbanded in 2000, so the teachers at Children's Healthcare of Atlanta met and decided to hold a conference for hospital teachers in November 2001. The title of the conference was Together Educators and Children Help Each Other Reach Success (T.E.A.C.H.E.R.S.). The energy among the participants at that conference was high and the groundwork for a national organization began.

In October 2001 Cincinnati Children's Hospital Medical Center hosted a second conference. News about the formation of a national organization for hospital teachers spread and 100 teachers from the United States and New Zealand attended. During the conference drafts of a Mission and Vision statement were developed.

In November 2002 the University of Texas M.D. Anderson Cancer Center hosted the third annual conference. During this conference it was decided

that the organization should represent hospital and homebound teachers. A title for the organization was chosen, Association for the Education of Children with Medical Needs (AECMN), and a board of directors was elected.

During 2003, board members developed by-laws and filed the necessary legal documents in order to form a non-profit organization. In October, the annual conference was held in St. Petersburg, FL. The bylaws were approved and AECMN officially became an organization. A board consisting of six members were elected and continued to support the education of our children with medical needs. Today the board consists of five elected officers (President, Vice President, Recording, Secretary, Communications/Media Coordinator, and Treasurer) and one appointed officer which is a non-voting position (Conference Chairperson).

Today the mission and vision of AECMN still continues. Every year a group of professionals interested in equal education for children with medical needs meet to exchange ideas, share best practices and build a supporting network. As the needs of our members grow and change, AECMN continues to evolve to support our hospital based educators.



**ASSOCIATION FOR THE EDUCATION
OF CHILDREN WITH MEDICAL NEEDS**

Executive Board

President

Samantha Shea, BSEd

Hospital-Based Teacher

Columbus City Schools

Nationwide Children's Hospital

Phone: 614.722.8761

Samatha.Shea@nationwidechildrens.org

Vice President

David Dixon, MEd

Director

Charlottesville Hospital Education Program

University of Virginia Children's Hospital

Phone: (434) 924-2658

dd3yb@virginia.edu

Treasurer

Brandon Sethi, MEd

Hospital Teacher

Cincinnati Children's Hospital Medical Center

Phone: 513.803.4903

Brandon.Sethi@cchmc.org

Recording Secretary

Sarah Smith, BA

Teacher/Educational Liaison

Helen DeVos Children's Hospital

Phone: 616.267.0924

Sarah.Smith2@helendevoschildrens.org

Communications and Media Relations Coordinator

Lindsay DeWilde

Educational Liaison

Riley Hospital for Children

Phone: 317-948-2261

ldewilde@iuhealth.org



**ASSOCIATION FOR THE EDUCATION
OF CHILDREN WITH MEDICAL NEEDS**

History

Nan Songer, a special educator at Syracuse University's Center for Human Policy, was one of the most progressive advocates for the educational rights of children with disabilities. She strongly believed the educational needs of students with cancer and blood disorders were overlooked. Nan's vision to create national standards initially brought a group of 15 professionals together in Syracuse, New York in 2005.

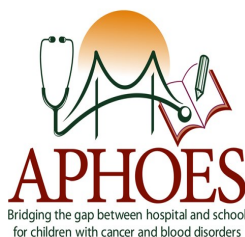
It was this group of 15 hematology and oncology school re-entry specialists who met to discuss their challenges, frustrations, successes and hopes for this population of students. After their initial meeting, Nan realized the efforts of this group had immense potential and urged them to reconvene to develop standards of practice for educating this population. Unfortunately, Nan became ill in 2005. She appointed David Gordon (Chairperson 2005-2011) to lead this group and to carry out her vision.

The group reunited at Stony Brook University in 2006 and 2007, and split into working groups and began drafting topic-specific standards of practice. In 2008, Winthrop Hospital hosted the next meeting where the group continued to draft the standards of practice.

Finally, in March 2009, the group convened at North Shore-LIJ Hospital where they decided to officially form as a 501(c)(3) not-for-profit professional association called the Association of Pediatric Hematology and Oncology Educational Specialists (APHOES). The inaugural APHOES conference was hosted by Greenville Children's Hospital in Greenville, South Carolina in April, 2010.

Historically, APHOES has engaged passionate professionals in the development of national standards to address the educational challenges of hematology and oncology patients. The common experiences of our first members included the creation of individual school re-entry programs for which standards did not previously exist. Each program consisted of varying budgets, personnel, and professional backgrounds. The shared desire to expand the efforts to meet the educational needs of children with hematologic and oncologic issues nationwide led APHOES members to create a document that is provided to organizations seeking to form or improve a school re-entry program.

In the future, APHOES aims to expand the organization and continue to improve the educational services to students with cancer and blood disorders.



Executive Board

Chairperson

Lisa Northman, PhD

Psychologist

Dana- Farber Cancer Institute

Phone: 617.632.6764

lisa_northman@dfci.harvard.edu

Vice Chairperson

Nicole Gutman, MS

School Intervention & Re-Entry Coordinator

Stony Brook Children's Hospital

Phone: 631.444.7521

nicole.gutman@stonybrookmedicine.edu

Secretary

Joni Hildreth, MPsy, NBCT

Teacher/Educational Coordinator

Levine Children's Hospital

Phone: 704.381.0156

joni.hildreth@carolinashealthcare.org

Treasurer

Courtney Emory, MEd, NBCT

School Intervention Specialist

University of Kentucky

Phone: 859.218.3442

courtney.white@uky.edu

Marketing And Communications Officer

Patty Dillhoff, MAT

Manager, School Intervention Program

Cincinnati Children's Hospital Medical Center

Phone 513.636.7322

patricia.dillhoff@cchmc.org

Member At-Large

Alicia Riggs, MEd

Patient Academic Services Coordinator

Johns Hopkins All Children's Hospital

Phone: 727.767.4130

ariggs1@jhmi.edu

Member At-Large

Cara Giannillo, MEd

School Intervention & Re-Entry Coordinator

Stony Brook Children's Hospital

Phone: 631.444.7521

cara.giannillo@stonybrookmedicine.edu

Member At-Large

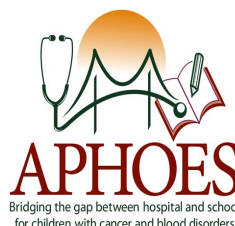
Karen Mixon-Martin, MS

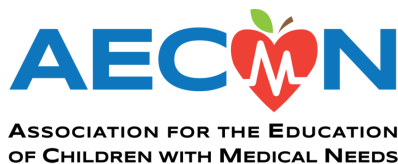
Educational Liaison

UCSF Benioff Children's Hospital

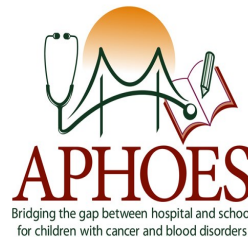
Phone: 415.502.7808

Karen.mixon-martin@ucsf.edu





The Association for the Education of Children with Medical Needs (AECMN) is a non-profit organization comprised of educators, healthcare professionals and caregivers involved in the education of children, adolescents, and young adults with chronic and acute illness. As an organization, AECMN works to serve the unique needs of our students by raising awareness about educational challenges, collaborating with like-minded professionals, and partnering with similar local and national organizations. It's the lifework of AECMN to advocate for the delivery of appropriate educational services for these children and identify best practices of teaching students with medical needs.



The Association of Pediatric Hematology Oncology Educational Specialists (APHOES) is a group of professionals (nurses, psychologists, social workers, child life specialists, school and hospital-based educators, physicians and others) that work together to address the educational needs of pediatric hematology and oncology patients. The group first convened in November 2005 out of a shared desire to improve the educational outcomes of pediatric hematology and oncology patients and to standardize the methods that yield positive outcomes. Since that time, APHOES members have gathered several times to draft and refine these standards, to network with other professionals and to collaborate on projects.

APHOES began offering professional development opportunities at the working group meetings which has evolved into an annual conference with a robust presentation agenda.

Conference Objectives

Overarching objectives for this conference are:

- To promote collaboration among professionals serving students with medical conditions.
- To provide opportunity for strategic planning and participation in the development of action steps.
- To develop advocacy skills, knowledge and methods for intervention with students who manage chronic or serious medical conditions.

St. Petersburg and Area Attractions

“Along with award-winning beautiful beaches, St. Petersburg is home to the world-renowned Salvador Dali Museum, top-rated restaurants and beautiful Fort De Soto Park. This waterfront escape is a perfect family getaway with so much to explore. The city, which glimmers between the Gulf of Mexico and Tampa Bay, is known for its warm weather and for holding the title of “most consecutive days with sunshine” at 768 days. Downtown St. Petersburg is the city’s heart, home to great shopping, restaurants, bars and attractions. After making a stop to check out the largest collection of Dali’s work outside of Spain, swing by the Chihuly Collection on picturesque Beach Drive to witness mind-blowing glasswork. Want to grab a bite to eat? Discover Locale Market, a one-of-a-kind 20,000 square-foot marketplace offering the region’s freshest and finest artisanal foods. Whether you’re having some down time on America’s Best Beaches or admiring beautiful Tampa Bay from downtown St. Pete, you’re in for some major fun in the sun.”

—Quote from: VISITFLORIDA.COM

Hotel and Travel Information

HILTON ST. PETERSBURG BAYFRONT

333 1st St. S

St. Petersburg, Florida 33701

Telephone: 727-894-5000



Hotel reservations at the conference rate of \$179.00 can be made by visiting our group reservation page: APHOES/AECMN JOINT CONFERENCE 2017 (group code: APHAEC).

The conference rate is guaranteed for reservations made on or before April 1, 2017 or until the group block is sold out (whichever comes first).

Valet parking is available at the Hilton for a daily fee of \$16 USD.

Tampa International Airport - TPA

- Airport Phone: 813-870-8700

Transportation from Airport

Additional information can be found online at: Ground Transportation

- Super Shuttle – Shared Passenger Van Service is available : 800-282-6817 or 727-572-1111
- Airport Taxi Service 813-253-0121(Yellow Cab) or 813-777-7777 (United Cab)

Tuesday, May 2, 2017 — Conference Kick-Off

Hilton St. Petersburg Bayfront, 333 1st St. S.

There is “power in participation” and so we ask that you come prepared to share, connect, and collaborate on best practices and experiences. We will be using the “EdCamp” methodology (see link below) to better meet the individual needs and expectations of our members while creating a true networking and collaborative environment. We hope the launching of this new format will be a powerful experience to better expand your professional resources and network.

click here to view: [EdCamp introduction](#)

- 8:00 AM – 9:00 AM Registration— **Lobby II**
Breakfast — **The Harbor View**
- 9:00 AM – 12:00 PM Association Work
AECMN — **The Pier/Skyway Rooms**
APHOES — **The Harbor View**
- 12:00 PM – 1:00 PM Lunch and Networking — **The Harbor View**
- 1:00 PM – 3:30 PM Igniting Your Light! — **The Harbor View/Pier/Skyway Rooms**
(EdCamp format—networking breakouts)
- 3:30 PM – 4:30 PM Hospital Tours — **Meet in Hotel Lobby**
- 5:30 PM – 6:30 PM Cocktails and Conversations — **Lobby II**
-

Wednesday, May 3, 2017 — Conference Day 1

Hilton St. Petersburg Bayfront, 333 1st St. S.

- 7:00 — 8:30 AM Registration — **Lobby III**
- 7:30 — 8:30 AM Continental Breakfast Available — **Lobby III**
- 7:30 — 8:45 AM **APHOES Business Meeting** (members only) — **HTC 3**
Continental Breakfast Included
- 9:00 — 9:30 AM **St. Petersburg Ballrooms I & II**
Welcome and Conference Kick Off
Samantha Shea, MEd, AECMN President
Lisa Northman, PhD, APHOES Chairperson
Brigitta Mueller, MD, Vice President, Medical Affairs and Chief Patient Safety Officer,
Johns Hopkins All Children's Hospital

Wednesday, May 3, 2017 continued**Hilton St. Petersburg Bayfront, 333 1st St. S**9:30 AM— 10:45 AM **Keynote***Maker Therapy Approach: Creative STEM Learning and Patient Well-being*
Gokul Krishnan PhD, Founder, Maker Therapy

10:45—11:00 AM Break

11:00 AM—12:00 PM **St Petersburg I & II***Transition Planning for Students Returning from Hospitalization: Surveying the Needs of School Personnel*

Scott Menner, MEd and Patty Dillhoff, MAT, Cincinnati Children's Hospital Medical Center, Cincinnati, OH

St. Petersburg III*Expanding a Hospital-Based Tutoring Program—A Collaborative Partnership*

Brenda Henne, MS, and Kelsey Hobson, BA, University of Michigan Health System, CS Mott Children's Hospital, Ann Arbor, MI

HTC 3*Developing Conceptual Understanding of Mathematics through Robotics Play for Children with Critical Illness*

Megan Nickels, PhD, University of Central Florida, Orlando, FL

12:00 — 1:15 PM

Lunch — **St. Petersburg I & II**

1:30 — 2:30 PM

HTC 4*Maker Therapy Approach: Hands-On Workshop*

Gokul Krishnan PhD, Founder, Maker Therapy

St. Petersburg III*School Intervention: The Missing Link in Follow-Up Care*

Kyle Herma, BS, Children's Hospital of Wisconsin, Milwaukee, WI

HTC 3*Building the Plane While You Fly It: Reconstructing a Psychiatric Hospital School Program in Portland, OR*

Benjamin White, MSpEd, Multnomah ESD - Unity Center for Behavioral Health, Portland, OR

St. Petersburg I & II*The Educational Impact of Pediatric Cancer Survivors*

Kris Frost, MEd, Wykesha Hayes, MEd, M D Anderson Children's Cancer Hospital, Houston, TX

Wednesday, May 3, 2017 continued

Hilton St. Petersburg Bayfront, 333 1st St. S

2:30 — 3:15 PM

Poster Presentations and Vendor/Exhibitor Tables — St. Petersburg III/Lobby III

Best Practices for the Educational Management of Students with Cancer and Chronic Illnesses: A Community Centered Model

Kris Frost, MEd and Wykesha Hayes, MEd, MD Anderson's Cancer Hospital, Houston, TX

Brain Station An Innovative Educational Program

Carrie Sakaino, PhD, Kapiolani Medical Center for Women and Children, Mililani, HI
Andrew Ken Stridiron, MPH Candidate, University of Hawaii, Honolulu, HI

Mathematical Immersion through Virtual Reality for Children with Cancer

Megan Nickels, PhD, and Bethany Fralish, RA, University of Central Florida, Deltona, FL

Sickle Cell Disease: Breaking the Cycle with Advocacy, Information, Support

Shawna Mazeitis, MEd, Children's Mercy Hospital, Kansas City, MO

The Education Fellow: An Avenue for Professional Preparation & Program Development

Kelsey Hobson, BA, C.S. Mott Children's Hospital, Michigan Medicine, Ann Arbor, MI

The Effect of Blood Glucose Levels in Individuals with Type 1 Diabetes on Reading Fluency

Thea Burgess, MEd, MA, Prince George's County Public Schools, Greenbelt, MD

Wellness Team Model to Provide Comprehensive Multidisciplinary Psychosocial Care in Pediatric Rehabilitation Medicine

Jodi Krause, MA, Children's Hospital Colorado, Aurora, CO

Working with Students with Eating Disorder (Center for Pediatric Eating Disorder)

Deanna Morgan, BA, Children's Health Children's Medical Center, Dallas, TX

3:30 — 4:30 PM

HTC 3

Relate, Reveal, Relax

Constance Turner, MA, MA, Cincinnati Children's Hospital Medical Center, Cincinnati, OH

St. Petersburg III

Understanding Leads to Better Performance of Students with Cystic Fibrosis

Sherry Belcher, MSN, CNL, Johns Hopkins All Children's Hospital, St. Petersburg, FL

St. Petersburg I & II

Back to School: Now What?

Beth Stuchell, BS, MSW and Sarah Whorf Mellifont, BSN, RN, C.S. Mott Children's Hospital, Ann Arbor, MI

Thursday, May 4, 2017 — Conference Day 2

Hilton St. Petersburg Bayfront, 333 1st St. S

8:00 — 9:00 AM

Registration and Continental Breakfast — **Lobby III**

Thursday, May 4, 2017 continued**Hilton St. Petersburg Bayfront, 333 1st St. S**

- 8:00 — 9:00 AM **AECMN Business Meeting** (members only)— **HTC 3**
Continental Breakfast Included
- 9:15 — 9:30 AM **St. Petersburg I & II**
Welcome and Thursday Kick-off
The Bridge Award presentation
- 9:30 — 10:30 AM **Keynote**
Ignite Your S.H.I.N.E.® – Be Unstoppable!
LaVonna Roth, MEd, Founder of Ignite Your S.H.I.N.E.®
- 10:30 — 10:45 AM Break
- 10:45 — 11:45 AM **St. Petersburg I & II**
Ignite Your S.H.I.N.E.® – Be Unstoppable! (cont.)
LaVonna Roth, MEd, Founder of Ignite Your S.H.I.N.E.®
- HTC 3**
School Experiences of an Adolescent with Complex Medical Needs
Hollie Filce, PhD, The University of Southern Mississippi, Hattiesburg, MS
- St. Petersburg III**
Brain Station An Innovative Educational Program
Carrie Sakaino, PhD, Kapiolani Medical Center for Women and Children, Mililani, HI
Andrew Ken Stridiron, MPH Candidate, University of Hawaii, Honolulu, HI
- 11:45 AM — 1:00 PM Lunch — **St. Petersburg I & II**
- 1:15 PM — 2:15 PM **St. Petersburg I & II**
School Re-entry Documentation Tool
Jeanne Boyle, MAEd and Deirdre Fischer, MEd, Advocate Children’s Hospital, Chicago, IL
- HTC 3**
Designing, Developing, and Deploying Interactive Activities to Stimulate Science, Technology, Engineering, and Mathematics (STEM) Learning in Chronically-Ill Children
Elaiissa Hardy, PhD, Emory University, Georgia Tech, Children’s Healthcare of Atlanta,
- St. Petersburg III**
A Hospital-Based School Reintegration Program for Pediatric Patients Demonstrates the Need for Mental Health Involvement
Lindsey Cervantes, MSW, City of Hope, Duarte, CA
- 2:15 — 2:30 PM Break
- 2:30 — 3:30 PM **St. Petersburg I & II**
Closing Session
LaVonna Roth, MEd, Founder of Ignite Your S.H.I.N.E.®
- 3:30 — 3:45 PM **Closing Remarks**
Evaluations, End of Day Raffle, Adjournment, Networking



Gokul Krishnan

Maker Therapy

Dr. Gokul Krishnan is Founder and Director of the Maker Therapy program at WestEd, a preeminent non-profit educational research, development, and service organization that works with education institutions and other communities throughout the United States and abroad to promote excellence, achieve equity, and improve learning for children, youth, and adults.

Maker Therapy (www.makertherapy.com), is an innovative hands-on hospital patient experience that combines science, technology, creativity, and education. Maker Therapy provides unique creative outlets for hospital patients, encourages social interchange with others, and at the same time helps improve patients' quality of life and physical and mental well-being.

Dr. Krishnan's Maker Therapy approach has been featured in multiple media outlets including the CBS Evening News and NPR's "All Tech Considered" as well as in publications such as Fast Company, Popular Mechanics, and the Tennessean. Additionally, Dr. Krishnan has received numerous awards including the White House's "Honorary Maker" Award and the First "Design-Make-Play" Award from the New York Hall of Science.

Dr. Krishnan is on a mission to create a more hopeful world for patients in hospitals across the globe through the implementation of Maker Therapy. Dr. Krishnan has a PhD in Learning Sciences from Vanderbilt University's Peabody College of Education and a M.S. in Mechanical Engineering from the University of California, Riverside.



LaVonna Roth

Ignite Your S.H.I.N.E.

Highly energetic and dynamic, LaVonna Roth is an internationally recognized keynote speaker, consultant and author, bridging how the brain learns (and thinks), with people's incredible intrinsic skills and talents (how they S.H.I.N.E.) is her deep passion. Her goal is to help individuals become confident in who they are, and for them to use that aptitude in making a difference within their communities.

Over 25,000 educators, students and organizations have benefited from LaVonna's wealth of practical, applicable, and down-to-earth strategies and insights to the most common and frustrating educational, behavioral and issues. These effective strategies are a direct result from years of research, as well as, firsthand classroom, consulting and life experiences.

LaVonna presents interactive and engaging seminars, and has done so across three continents. She is the founder of the Ignite Your S.H.I.N.E. initiative where every person is encouraged to ignite their S.H.I.N.E. and use those gifts to illuminate the world.

In education, she is the best-selling author of *Brain-Powered Strategies to Engage All Learners*, and the seven book series, *Brain-Powered Lessons to Engage All Learners*. As an educator of ten years, LaVonna was recognized at state and local levels for her teaching success. She credits the amazing teachers she taught with and who are role models for her achievements.

Sherry Belcher is a Clinical Nurse Leader at Johns Hopkins All Children's Hospital. She focuses on the care of patient with Asthma and Cystic Fibrosis with the goal of improving patient outcomes.

Jeanne Boyle is the Hospital School Coordinator at Advocate Children's Hospital in Park Ridge, Illinois. Jeanne entered the position with 33 years of teaching and administration experience. Certified as a general and special education teacher, Jeanne holds a Masters in Educational Administration with a Type 75 Certificate. During her 23-year tenure on faculty at Illinois State University, Jeanne received the Outstanding University Teacher Award. Jeanne's work at Advocate Children's Hospital focuses on bridging knowledge, relationships, and school services among families, the medical team, and schools to support patients' re-entry and provide patients with an appropriate education.

Thea Burgess is a Reading Specialist and Special Education Teacher in the Washington, DC Metro Area. Throughout her teaching experiences she has worked with students with a variety of medical needs. Thea has a BA in Human Development and Elementary Education from Connecticut College, MED in Reading Education from the University of New Hampshire, MA in Special Education: Learning Disabilities from American University. Thea is dedicated to giving children with medical needs the education they deserve in the Least Restrictive Environment. In her free time, she volunteers as a Patient Care Volunteer at Children's National Medical Center.

Lindsey Cervantes is a Clinical Social Worker at City of Hope in Southern California. She received her Masters of Social Work from UCLA. She is the primary social worker for the pediatric patients with solid tumors, primarily working with patients with musculoskeletal cancers and brain tumors. Lindsey is also the School Program Coordinator and is frequently consulted to help meet the educational needs of patients of all ages throughout the hospital. Her focus is on connecting the mental health needs with the practical needs of receiving education while undergoing cancer treatment and into survivorship.

Patty Dillhoff is the manager of the School Intervention Program in the Center for School Services

and Educational Research at Cincinnati Children's Hospital (CCHMC). Patty has been working in the School Intervention Program at CCHMC since 2007. Prior to becoming manager, Patty worked as a school intervention specialist who advocated for the educational needs of patients in the Survivorship Clinic in the Cancer and Blood Diseases Institute at CCHMC. In partnership with the School Services Leadership Team at CCHMC, Patty seeks to improve the delivery of service, transition of care, educational success, and overall quality of life for patients with chronic medical conditions. In addition to her work at CCHMC, Patty collaborates and shares her expertise across the country and internationally through her leadership roles in the Association of Pediatric Hematology Oncology Educational Specialists (APHOES).

Hollie Filce is Professor and Coordinator for Special Education at the University of Southern Mississippi. She also serves as Associate Director of the Pull-thru Network, a non-profit, all-volunteer organization dedicated to the needs of those born with an anorectal malformations, colon disease, and similar diagnoses. She is a grant writer and director, overseeing a \$4.4 million grant to implement positive alternatives to punitive discipline in schools. She has published on the educational and emotional needs of children with chronic illnesses and other disabilities.

Deirdre Fischer has been the school coordinator at Advocate Children's Hospital in Oak Lawn, IL, for 11 years now. With a strong focus in the pediatric hematology and oncology program, she concentrates on the school reentry process and school communication for patients diagnosed with chronic illnesses. She received her undergraduate education degree with a K-12 certification from Lewis University, in 1997, and received her Master's in Educational Technology in 2010 from there as well. Deirdre was also recognized in 2010 for partial authoring of a research-based article: Addressing the Barriers of Neurocognitive Screening in Long-term Survivors of Pediatric Cancer.

Bethany Fralish is an undergraduate at the University of Central Florida studying Elementary Education. Bethany recently got involved in research on the education and quality of life of children with critical

illness. Bethany is currently completing an undergraduate thesis titled "Measurement Concepts in Virtual Reality for Children with Cerebral Palsy." She plans to continue this line of research with Megan L. Nickels, Ph.D, Assistant Professor, during her pursuit of her master's degree.

Kris Frost is a school re-entry coordinator at the Children's Cancer Hospital at M D Anderson. She meets with all school aged patients during their treatment phase, and works to ensure that they have all needed accommodations when they return to school either during or after cancer treatment. She continues to follow patients until they transition out of high school into college.

Elaissa Hardy is an instructor in Dr. Wilbur Lam's laboratory in the Department of Pediatrics at Emory University and work in the Wallace H. Coulter Department of Biomedical Engineering at Georgia Tech. Her background is in Electrical Engineering and microelectronic fabrication. In addition to hematologic research, she has a passion for teaching undergraduate students and K-12 students through her in-depth involvement in BME HealthReach, an educational outreach program for chronically-ill patients where they are taught math and science through innovative hands-on activities using their own illness as the springboard for learning. The program also enables the Georgia Tech undergraduate student to develop the "curricula" (following state and national educational standards) and implement the program.

Wykesha C. Hayes currently serves as the Pediatric School Coordinator at the Children's Cancer Hospital at MD Anderson Cancer Center. For the past 9 years she has worked to establish efficient school re-entry processes for Oncology patients. She enjoys engaging medical teams, parents and patients in academic planning and advocating for their educational needs. With over 15 years of experience in Education. Wykesha holds a Bachelors of Science Degree in Psychology from the University of Houston, a Master's in Educational Management from the University of Houston-Clear Lake and is completing her Ph.D program in Curriculum and Instruction at Texas A&M University this Spring. She is currently researching the perceptions of school administrators and their role in the management of students with chronic conditions.

Brenda J. Henne has had the opportunity to develop collaborative partnerships for school and hospital based environments to deliver multi-disciplinary services to students and patients. She is an Educational Specialist with C. S. Mott Children's Hospital at the University of Michigan and recently began a one-year pilot to develop the model for educational services within the Pediatric Congenital Heart Center. As a classroom teacher, building level administrator, district level administrator and educational consultant, she has detailed experience designing and implementing services for a variety of stakeholders to accomplish specific program goals. Developing multi-disciplinary partnerships and working with supportive communities, both formal and informal, has been the result of building trust through knowledge, commitment, and collaboration. Brenda has a long standing commitment for providing exemplary educational services for children with the greatest needs - currently for children with complex chronic medical needs.

Kyle Herma is the School Intervention Specialist serving the Herma Heart Center at Children's Hospital of Wisconsin. Kyle has been at Children's since February 2015 where she designed, conducted, and analyzed a formal pilot study on school intervention and its impact on medical outcomes and quality of life for children with Congenital Heart Disease. Prior to this position, Kyle was a teacher at Milwaukee College Prep's 38th street campus. In both roles, Kyle has shown her dedication to serving children who are placed at-risk for school failure and ultimate mission to achieve equal access to quality education for all.

Kelsey Hobson is the Education Fellow within the Child & Family Life department at C.S Mott Children's Hospital in Ann Arbor, MI. In her fellowship, Kelsey works predominantly in hemodialysis, providing direct instructional support and school intervention for children with chronic kidney disease. Prior to working in the hospital setting, Kelsey taught 4th grade in the public school system and completed a child life practicum at Children's Hospital of Michigan. Kelsey earned her BA in Elementary Education & Psychology from Hope College, and is currently working toward an MSED in Special Education through Purdue University.

Jodi Krause, MA Clinical Learning Specialist, began her career at Children's Hospital Colorado in 2010 after teaching special education in public and private schools for many years. While at Children's Hospital Colorado, Jodi served on the outpatient team for Learning Services as a diagnostician and therapist for children with dyslexia and other developmental reading disorders before transitioning into her current role as team lead of the inpatient teaching team. She has extensive experience teaching children with chronic illness and significant medical needs and recently has specialized as a teacher of students with brain and spinal cord injuries on the rehabilitation unit. Jodi serves as the primary teacher in the rehab classroom, a program she co-created. Her role also includes coordination of the return to school for patients discharging from the rehabilitation unit. She is very active on the leadership teams throughout the organization.

Shawna Mazeitis is a Hospital Based Teacher at Children's Mercy Hospital. She earned her Master's Degree from the University of Kansas in Curriculum and Instruction and has taught several years in the Missouri and Kansas school systems. She is active in her community, began a tutoring program at the Ronald McDonald House in Kansas City, and serves on the Uriel Owens Sickle Cell Foundation Board. She is a strong advocate for children with Sickle Cell disease and for her patients and families affected by cancer.

Scott Menner has been at Cincinnati Children's Hospital for over 7 1/2 years, functioning as a principal of the program since 2013. Before that, he spent 7 years teaching various grades at various schools in all core subjects. He is currently working through his doctoral program at Capella University in education management and leadership. He is married with 2 daughters (14 and 11) who keep him very busy. Scott likes to say he provides free Uber service around town for them. He also enjoys volunteering and relaxing when he can.

Deanna Morgan is a certified special education teacher at Children's Health, Children's Medical Center-Plano in the Center for Pediatric Eating Disorders. Deanna has worked with eating disorder patients for 8 years. Prior to her tenure as a teacher she was a milieu therapist. Deanna holds a B.A in Psychology and an associate's degree in counseling. Deanna is a passionate

advocate for patients who have an eating disorder in schools. Deanna is fulfilling Children's mission "making life better for children" by ensuring that schools in North Texas and beyond understand the impact that an eating disorder can have on education.

Megan Nickels is an Assistant Professor of STEM Education in the College of Education and Human Performance at the University of Central Florida and an alumna of Illinois State University where she received her Ph.D. in mathematics education in 2015. She received her undergraduate degree in early childhood education from Augusta State University in 2006, and her Master of Science degree in mathematics education from Illinois State University in 2012. Dr. Nickels taught elementary school in urban, rural, and hospital settings from 2006-2015. Dr. Nickels researches how children with critical illnesses (cancer, HIV/AIDS, etc.) learn mathematics through robotics and immersive virtual reality. She conducts her research using Wonder Workshop's Dash robot, the Lego Mindstorms EV3 robotics kits, and the HTC Vive virtual reality system. Dr. Nickels' research has been supported in part by \$3.5+ million dollars from NASA and the U.S. Department of Education.

Carrie Sakaino has over 30 years of educational experience teaching all levels. She possesses a doctorate in Education with a specialization in Exceptionalities, Adult Learning, Journaling and Reflection. Carrie also possesses certification in Cognitive Rehabilitation which she incorporates when working with her pediatric patients.

Andrew Ken Stridiron is the Hawaii State Department of Education Hospital Tutor at Kapiolani Medical Center for Women and Children. He has worked in the position for the last two years. Currently, Andrew is pursuing a Masters in Public Health at the University of Hawaii with hopes to help improve and expand the hospital's educational program to better serve our keiki.

Beth Stuchell is the School Intervention Specialist for the Pediatric Hematology, Oncology, Blood and Marrow Transplant program at C.S. Mott Children's Hospital in Ann Arbor, Michigan. Beth began her professional career as an elementary and middle school teacher. After teaching for ten years, she obtained her Master's degree in social work at the University of Michigan. Beth worked

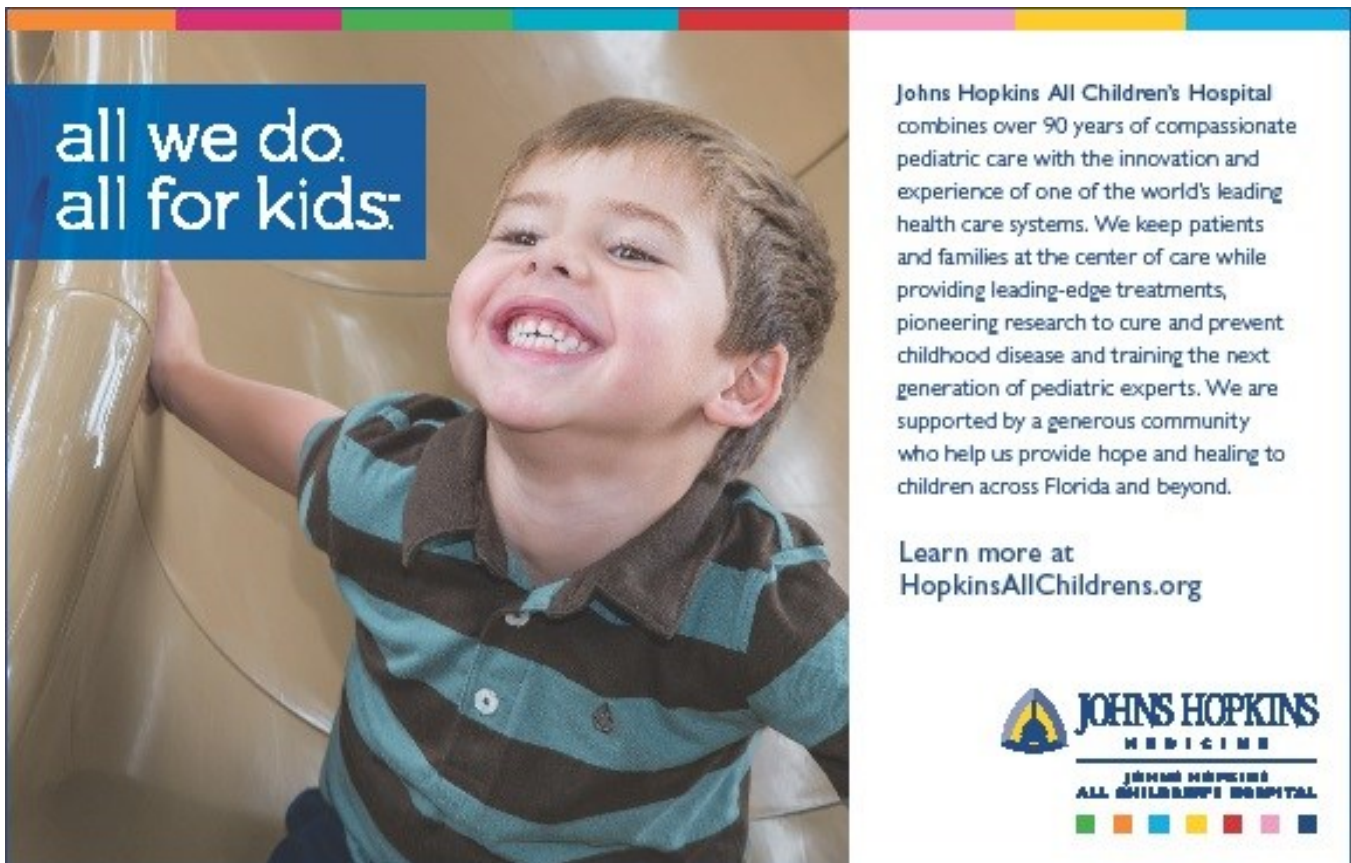
first as a clinical social worker with adults, then transitioned to pediatrics in the HemOnc and Transplant program. Beth took on the role of School Intervention Specialist upon its creation in December, 2013. Areas of interest include oncology survivorship, addressing health-related barriers to educational and vocational opportunities and fostering multi-disciplinary research collaborations.

Constance Turner currently works as a Bedside Hospital Teacher with The Cincinnati Children's Hospital Psychiatric Department. Constance holds a Masters Degree in Curriculum Instruction, as well as, a Masters Degree in Organizational Leadership with an emphasis in Principal Leadership. Constance has 22+ years experience teaching grades K-12 as both a regular education and special education teacher. Constance's personal passion is reading and aims to spread that passion with her enthusiasm as a storyteller.

Benjamin White is a Teacher Case Manager that runs a hospital school program at the Unity Center for Behavioral Health in Portland, OR. With 20 years of experience working with teenagers, Benjamin designed a culturally relevant program that partners with

hospitalized teens in psychiatric crisis and collaborates with interdisciplinary teams to support their transition back to school. After earning a BS in Sociology/Communication, Benjamin spent the next 10-year season of his life with a broad spectrum of teens experiencing homelessness on the streets of Portland, combatting drastic poverty in Haiti and navigating the maze of young adulthood in suburban Bay Area. This, eventually, led to graduate school and a pilot project developing models of mainstream inclusion for high school students managing mental health diagnoses. Benjamin was recently awarded Keep Oregon Well's annual "Mental Health Hero" award. He also loves spicy burritos, Portland Timbers Football Club and loud music!


Sarah Whorf Mellifont has been a pediatric nurse for 30 years and has various experiences in educating patients and families in the inpatient acute care setting, most recently in the area of child and adolescent psychiatry. She assisted in the design of the hospital resource center and in serving families, developed an interest in helping these families reintegrate their child back into the school setting following short or long term hospitalization.



all we do.
all for kids.

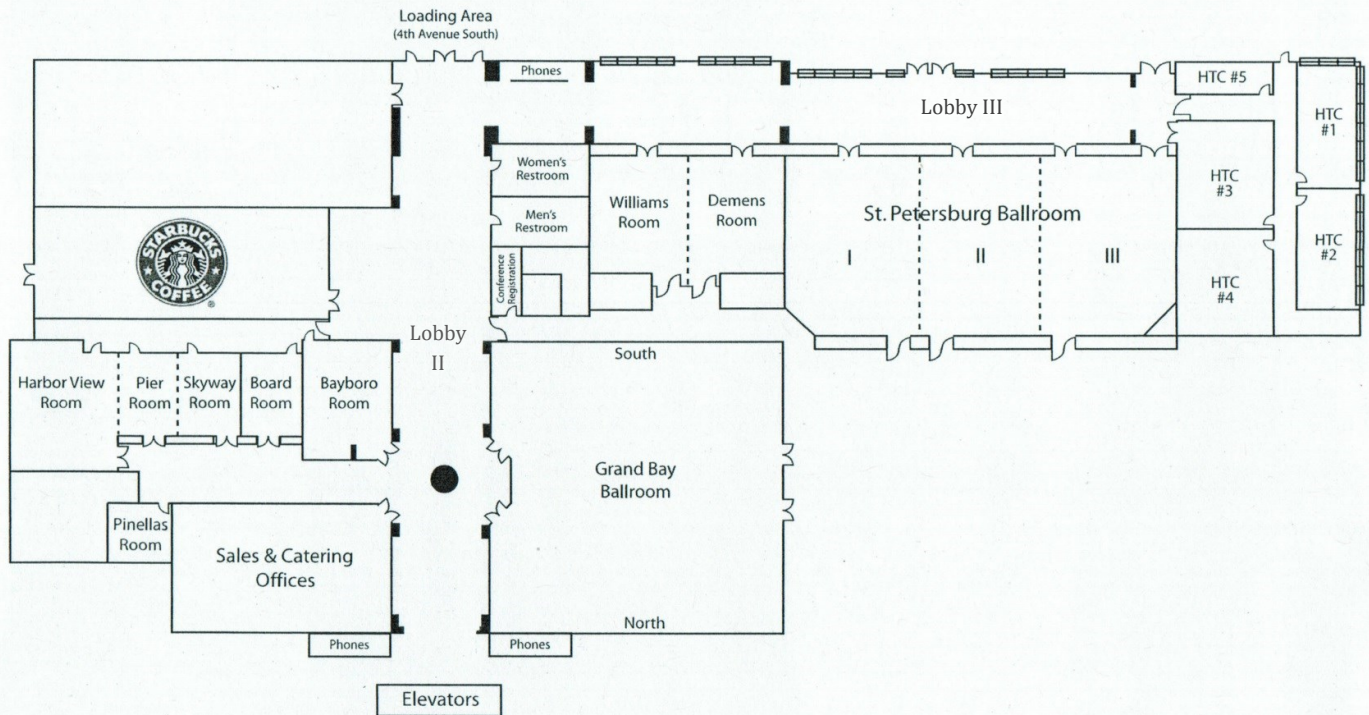
Johns Hopkins All Children's Hospital combines over 90 years of compassionate pediatric care with the innovation and experience of one of the world's leading health care systems. We keep patients and families at the center of care while providing leading-edge treatments, pioneering research to cure and prevent childhood disease and training the next generation of pediatric experts. We are supported by a generous community who help us provide hope and healing to children across Florida and beyond.

Learn more at
HopkinsAllChildrens.org



JOHNS HOPKINS
MEDICINE
JOHNS HOPKINS
ALL CHILDREN'S HOSPITAL

Hilton St. Petersburg Bayfront Banquet Space





we can see the end of cancer from here.

The mission of The Leukemia & Lymphoma Society (LLS) is: Cure leukemia, lymphoma, Hodgkin's disease and myeloma, and improve the quality of life of patients and their families. LLS exists to find cures and ensure access to treatments for blood cancer patients. We are the voice for all blood cancer patients and we work to ensure access to treatments for all blood cancer patients.

Professional Education

To view **free** professional education videos and additional professional resources, visit www.LLS.org/professionaled.


Patient Education

To view **free** patient education videos, visit www.LLS.org/educationvideos.

To view **free** education telephone/web programs, visit www.LLS.org/programs.

Learn more about LLS resources by visiting www.LLS.org or call an LLS Information Specialist at (800) 955-4572, Monday to Friday, 9 a.m. to 9 p.m. ET.





What happens
with school
when a child
is hospitalized?

AECMN
ASSOCIATION FOR THE EDUCATION
OF CHILDREN WITH MEDICAL NEEDS

www.aecmn.org



Bridging the gap between hospital and school
for children with cancer and blood disorders

For information about membership, educational opportunities, and
professional resources, visit our website at www.aphoes.org.



